



Using Vantage to Add Text to a Slate Video



Synopsis 2

Telestream Software..... 2

Configuring Vantage and Components..... 2

Create the Workorder Scheme..... 3

Create the CSV/Workorder..... 4

Create the CML..... 5

Create the Workflow..... 7

Activate and Test the Workflow 12

Copyright and Trademark Notice..... 13

Note: This guide is written for video professionals who are familiar with using Vantage. To implement applications in Vantage, you should know how to create workflows and submit jobs. If you aren't familiar with Vantage, we suggest that you review the *Vantage User's Guide* and *Vantage Domain Management Guide* as needed.



Synopsis

Vantage includes the capability of embedding text into a slate video using Post Producer, workorder data, and your existing slate video file.

In a Vantage workflow, the method used to define the text to embed in the slate is a CSV workorder file. A workorder scheme used in a Workorder action parses the workorder file text and generates variables to contain each of the text fields. A CML file describes how Post Producer should insert these text variables into the slate video, and a Conform action reads the CML file and performs the text insertion into the video file.

Note: This process requires a Vantage Post Producer License and knowledge of workorder configuration, CML editing, and use of variables in a Vantage Workflow.

The following procedure explains how to use Vantage and the methods summarized above to create a slate video with embedded text.

Telestream Software

Your Vantage domain consisting of the following components must be installed, licensed, and operating properly.

- Vantage 7.0 or later.
- Vantage Post Producer 7.0 or later.

Configuring Vantage and Components

The following topics and steps lead you through creating the Vantage workflow and additional components required.

- [Create the Workorder Scheme](#)
- [Create the CSV/Workorder](#)
- [Create the Workflow](#)
- [Create the CML](#)

Create the Workorder Scheme

The text to be written into the slate file will come from a workorder submitted to a Workorder action in a Vantage workflow. The workflow converts the workorder data to variables for use in a CML.

Before the workorder and workflow can be used, a workorder scheme for parsing the workorder must be created using the Vantage Management Console:

1. Launch the Vantage Management Console, and select Fulfillment Schemes > Workorder Schemes from the left panel.
2. In the right panel, create a new workorder scheme named something meaningful, such as Slate Workorder Scheme.
3. Create the new workorder fields shown below and in the [Workorder Action \(page 7\)](#). Set each Value Type to *Text* and each Qualifier to *Variable*. (You can use your own field names as needed to make this example work for your environment.)
4. Save the scheme and leave the Console open for the next topic.

The screenshot displays the Vantage Management Console interface. The left sidebar shows a navigation tree with 'Workorder Schemes' selected under 'Fulfillment Schemes'. The main panel shows the configuration for a 'Slate Workorder Scheme' with a CSV scheme type. Below the configuration, a table lists 13 fields to be extracted from the workorder.

Field Name	Description	Value Type	Qualifier	Job Name	WorkOrder Index
Slate_FileName		Text	Variable		1
Slate_Company Name		Text	Variable		2
Slate_Series Name		Text	Variable		3
Slate_Episode Name		Text	Variable		4
Slate_Program ID		Text	Variable		5
Slate_File ID		Text	Variable		6
Slate_CTC Seamless		Text	Variable		7
Slate_Date-Editor-Room-Pr...		Text	Variable		8
Slate_Act 01		Text	Variable		9
Slate_Act 02		Text	Variable		10
Slate_Act 03		Text	Variable		11
Slate_Act 04		Text	Variable		12
Slate_Act 05		Text	Variable		13

Below the table, the configuration for the selected field 'Slate_FileName' is shown:

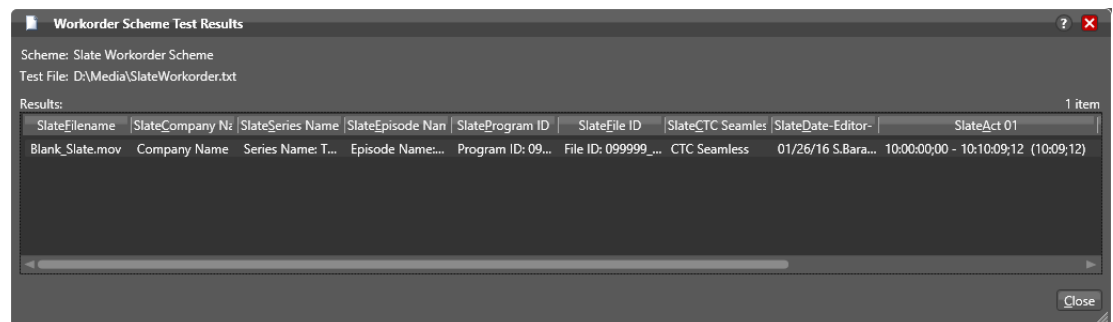
Field Name: Slate_FileName
Description:
Qualifier: Variable
Value Type: Text
 Use as job/content name
Extraction Criteria:
WorkOrder Index: 1

Create the CSV/Workorder

Before you can test or use the Workorder Scheme you just created, you'll need to create a workorder that can be parsed by the scheme. In a text editor, create a .csv file that contains comma-separated text data matching the fields in the Workorder Scheme. Here's an example that matches the example scheme from the previous topic:

```
Blank_Slate.mov,Company Name,Series Name: The Great Show,Episode  
Name: Wide Open,Program ID: 099999,File ID: 099999_The Great  
Show_WideOpen,CTC Seamless,01/26/16 S.Barasonski / Edit 12 /  
B.Fishimal,10:00:00;00 - 10:10:09;12 (10:09;12),10:10:09;12 -  
10:15:48;21 (05:39;09),10:15:48;21 - 10:25:28;04  
(09:39;13),10:25:28;04 - 10:31:19;15 (05:51;11),10:31:19;15 -  
10:37:32;06 (06:12;21),10:37:32;06 - 10:44:00;02 (06:27;26),TRT:  
44:00,Program is on time,Textless: 10:45:00;02,Textless TRT: 44:00
```

To test your scheme and .csv file, use the Test button in the Vantage Management Console Workorder Scheme panel. The Test button lets you browse for your .csv file and opens it in a window using your scheme. If the scheme and .csv work correctly together, the window should show the workorder text parsed into fields defined by the scheme as shown below. If your workorder doesn't parse correctly, fix the scheme or the workorder as needed.



Create the CML

The following topics explain how to write a CML file for use with the Slate workflow. This requires knowledge of Vantage Post Producer. See the Post Producer guides supplied with the optional product for details.

Defining the Source

The CML can define a nickname as the source or a specific file and location of the file. In the example below, a nickname is used to define the source. This nickname is created by an Associate action in the workflow.

```
<?xml version="1.0" encoding="utf-8"?>
<Composition created="2013-06-26T10:16:34.1293676-07:00" xmlns="Telestream.Soa.Facility.Playlist">
  <Source identifier="1">
    <File location="{${Original}" />
    <Subtitle />
  </Source>
  <Sequence layer="1">
    <Segment>
      <Video source="1" layer="1"/>
    </Segment>
  </Sequence>
</Composition>
```

Configure the Title Elements in the CML

The example below shows how to configure the Title elements to be written into the slate as text. Each bit of Text will have its own Title element to be written into the slate.

This is where you will also define the font, font size, location, etc. of the Text to be embedded into the Slate.

```
<Title align="head" adjust="edge" fill="none" layer="1"
duration="00:00:07;00@29.97" font="Helvetica" size="46pt"
weight="bold"
      foreground-color="white" background-color="transparent"
wrap="true" horizontal-align="left" overflow="resize"
layout="stretch">
  {${Slate_Program ID}}
  <Area left="100px" top="374px" />
  <Shadow color="white" softness="85%" vertical-offset="4px"
horizontal-offset="4px" />
</Title>
```

You can see in the above example that the input variable from the workorder "Slate_Program ID" ({\${Slate_Program ID}}) is defined as the source data for this Title element.

There must be a Title element for each variable created in the Workorder action for which you wish to create text.

In the workflow shown above the CML was given a nickname of "CML". This nickname will be submitted into the Conform action.

The following abbreviated example shows how a few of the title elements are created. Notice that these elements reference the workorder variables used in the workflow.

6 | Using Vantage to Add Text to a Slate Video

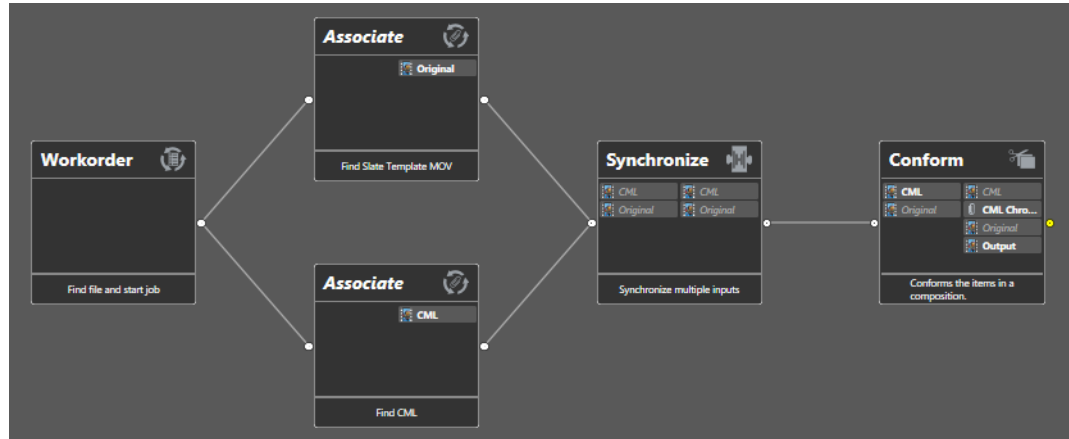
Configuring Vantage and Components

```
<?xml version="1.0" encoding="utf-8"?>
<Composition created="2013-06-26T10:16:34.1293676-07:00" xmlns="Telestream.Soa.Facility.Playlist">
  <Source identifier="1">
    <File location="{#{@Original}" />
    <Subtitle />
  </Source>
  <Sequence layer="1">
    <Segment>
      <Video source="1" layer="1"/>
      <Title align="head" adjust="edge" fill="none" layer="1" duration="00:00:07:00829.97" font="Helvetica" size="46pt" weight="bold"
        foreground-color="white" background-color="transparent" wrap="true" horizontal-align="left" overflow="resize" layout="stretch">
        {{{Slate_Company Name}}
        <Area left="100px" top="206px" />
        <Shadow color="white" softness="85%" vertical-offset="4px" horizontal-offset="4px" />
      </Title>
      <Title align="head" adjust="edge" fill="none" layer="1" duration="00:00:07:00829.97" font="Helvetica" size="46pt" weight="bold"
        foreground-color="white" background-color="transparent" wrap="true" horizontal-align="left" overflow="resize" layout="stretch">
        {{{Slate_Series Name}}
        <Area left="100px" top="242px" />
        <Shadow color="white" softness="85%" vertical-offset="4px" horizontal-offset="4px" />
      </Title>
      <Title align="head" adjust="edge" fill="none" layer="1" duration="00:00:07:00829.97" font="Helvetica" size="46pt" weight="bold"
        foreground-color="white" background-color="transparent" wrap="true" horizontal-align="left" overflow="resize" layout="stretch">
        {{{Slate_Episode Name}}
        <Area left="100px" top="318px" />
        <Shadow color="white" softness="85%" vertical-offset="4px" horizontal-offset="4px" />
      </Title>
      <Title align="head" adjust="edge" fill="none" layer="1" duration="00:00:07:00829.97" font="Helvetica" size="46pt" weight="bold"
        foreground-color="white" background-color="transparent" wrap="true" horizontal-align="left" overflow="resize" layout="stretch">
        {{{Slate_Program ID}}
        <Area left="100px" top="374px" />
        <Shadow color="white" softness="85%" vertical-offset="4px" horizontal-offset="4px" />
      </Title>
      <Title align="head" adjust="edge" fill="none" layer="1" duration="00:00:07:00829.97" font="Helvetica" size="46pt" weight="bold"
        foreground-color="white" background-color="transparent" wrap="true" horizontal-align="left" overflow="resize" layout="stretch">
        {{{Slate_File ID}}
        <Area left="100px" top="430px" />
        <Shadow color="white" softness="85%" vertical-offset="4px" horizontal-offset="4px" />
      </Title>
      <Title align="head" adjust="edge" fill="none" layer="1" duration="00:00:07:00829.97" font="Helvetica" size="46pt" weight="bold"
        foreground-color="white" background-color="transparent" wrap="true" horizontal-align="left" overflow="resize" layout="stretch">
        {{{Slate_CTC Seamless}}
        <Area left="100px" top="486px" />
        <Shadow color="white" softness="85%" vertical-offset="4px" horizontal-offset="4px" />
      </Title>
    </Segment>
  </Sequence>
</Composition>
```

When you finish writing the CML, place the completed CML in a permanent location or folder on the network. Use the Associate action in your workflow to bring the CML into the job and to give the CML a nickname.

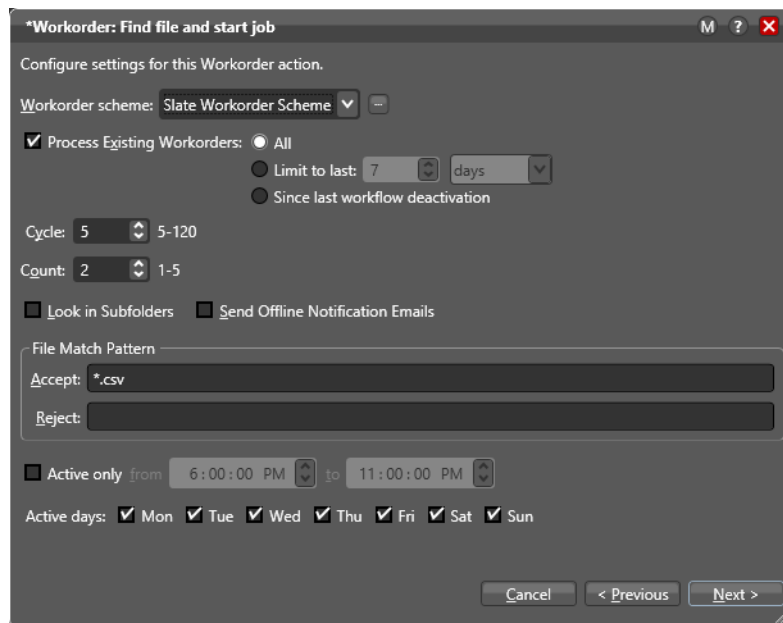
Create the Workflow

Next, create a Vantage workflow similar to the one shown below.



Workorder Action

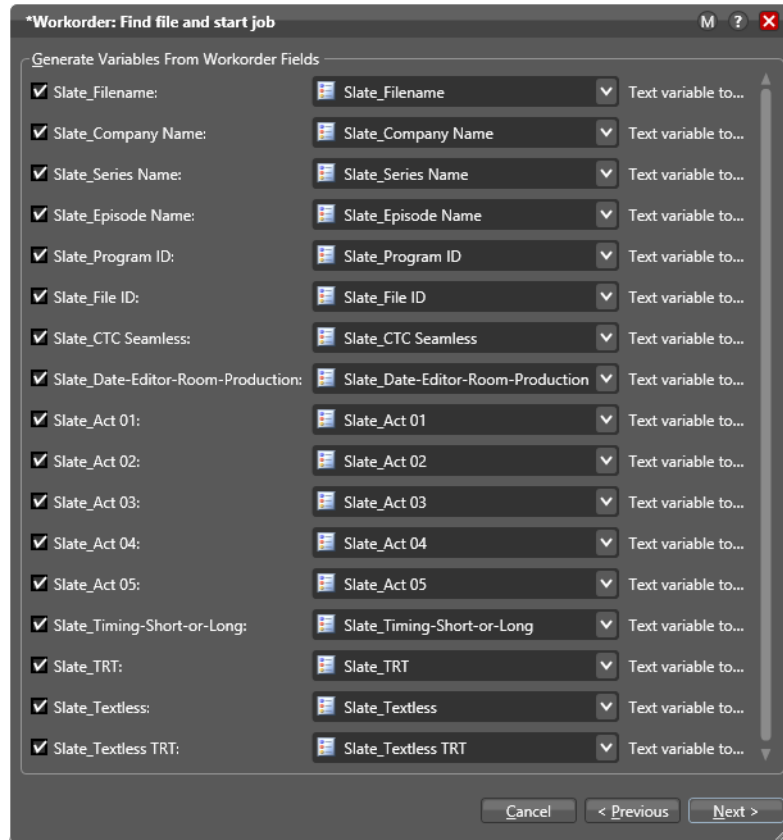
In the Workorder action, set the Workorder scheme to the scheme you defined previously using the Vantage Management Console. Set the Accept field to *.csv to detect only your .csv workorder file and import its contents.



The Workorder action will list the variable names defined in the scheme.

Check the variables you want to include and assign or add new variables as needed to completely populate all the variables in the Workorder action.

These variables will be used by the CML and must match identically the variable references in the CML.

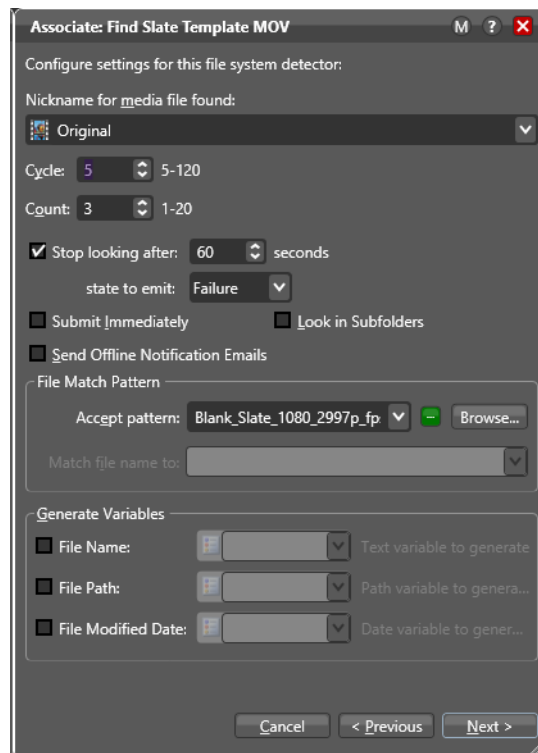


Top Associate Action

The top Associate action watches a folder for a blank slate file and then assigns a nickname (Original) to the file. In the inspector, specify the path to the watch folder, and then specify the nickname and Accept pattern as shown below.

In the configuration example shown below, the file name is hard-coded into the Accept pattern by browsing for and locating the file.

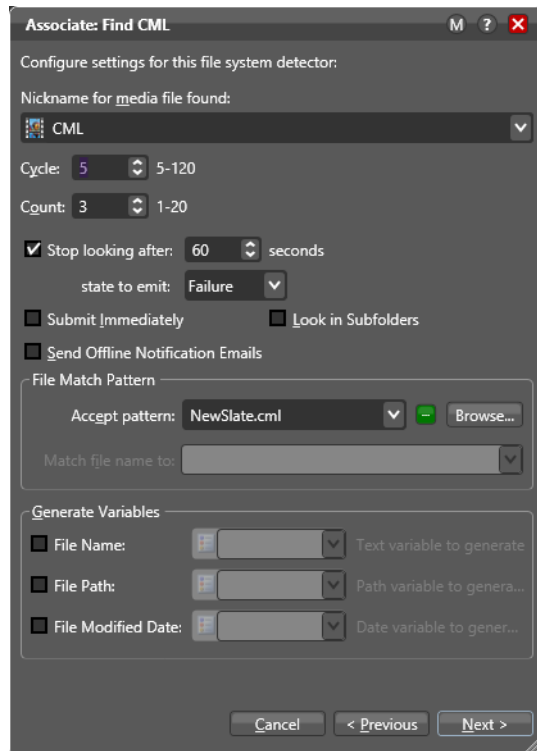
To use the configuration with multiple files, you can specify a pattern, such as *.mov to pick up any QuickTime MOV files dropped into the watched folder. You can also assign a variable that points to a file.



Bottom Associate Action

The bottom Associate action finds the CML file you created in the watch folder and assigns a nickname (CML) to the file. In the inspector, specify the path to the watch folder, and then specify the nickname and Accept pattern as shown below.

As with the previous Associate action, you can fill in the Accept pattern with an actual file name, with a pattern such as *.cml to pick up any CML file dropped into the folder, or you can assign a variable that points to the CML file.



Synchronize Action

The Synchronize action is not required but helps keep the workflow orderly. It also shows you the outputs of the Associate actions feeding the Conform input and ensures that the CML and Original files are provided to the Conform simultaneously.

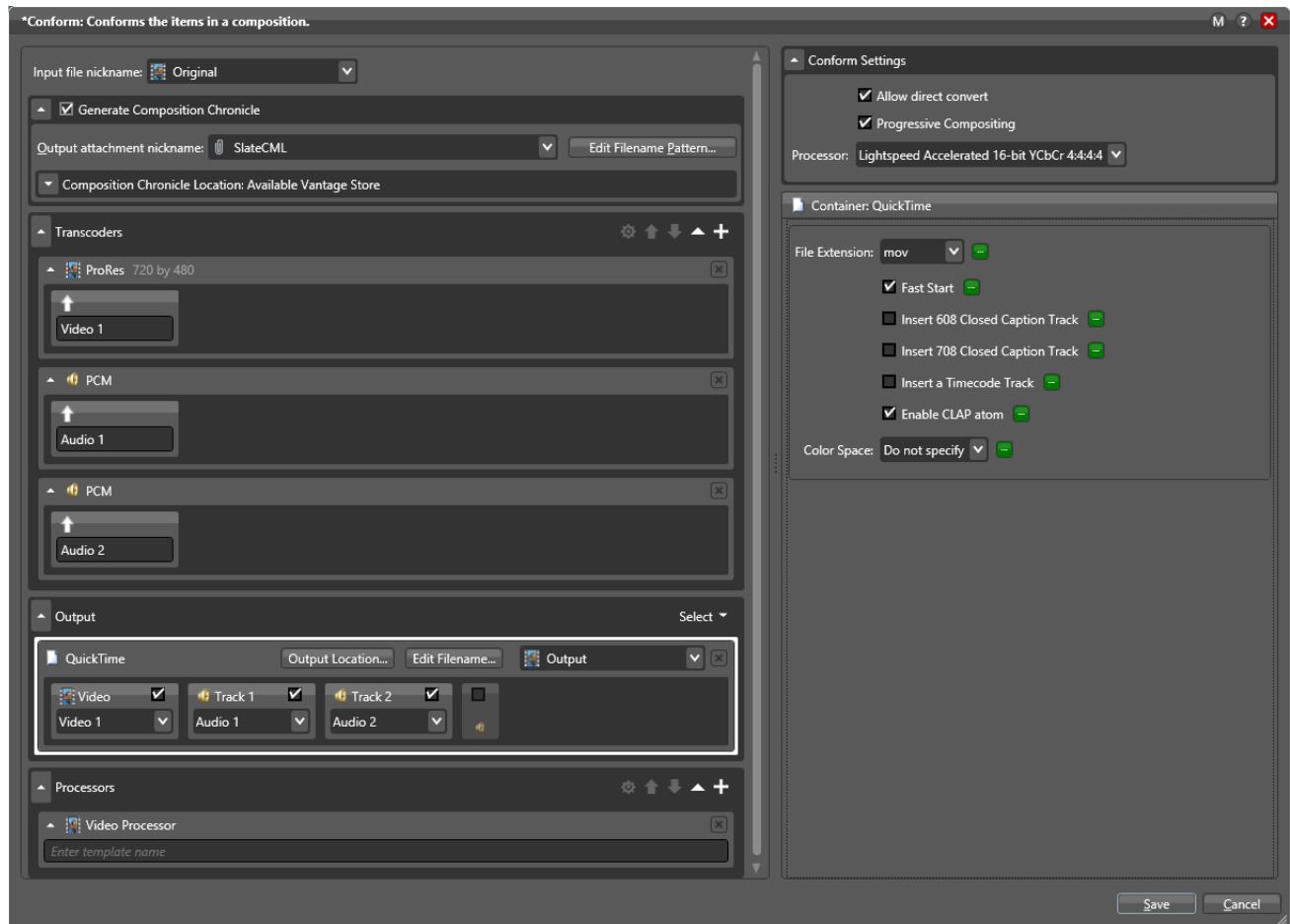
Conform Action

The Conform action integrates the CML containing variables pointing to the workorder text into the slate media file.

In our example below, the Transcoders are set to use a ProRes video codec, two-channels of PCM audio codecs (add as many audio channels as you need).

A QuickTime container wraps the video and two audio channels to produce the Output. The output media file is assigned the nickname Output.

The Processor uses the Video Processor to handle media transcoding.

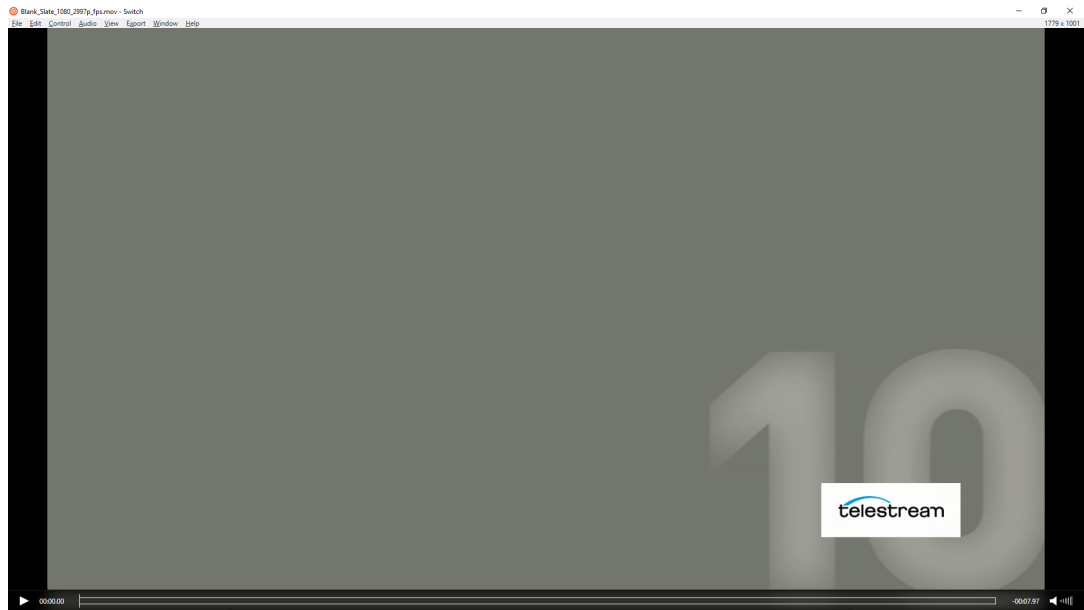


The Conform action completes the example workflow, but you can add other actions to move or copy the media file to another location.

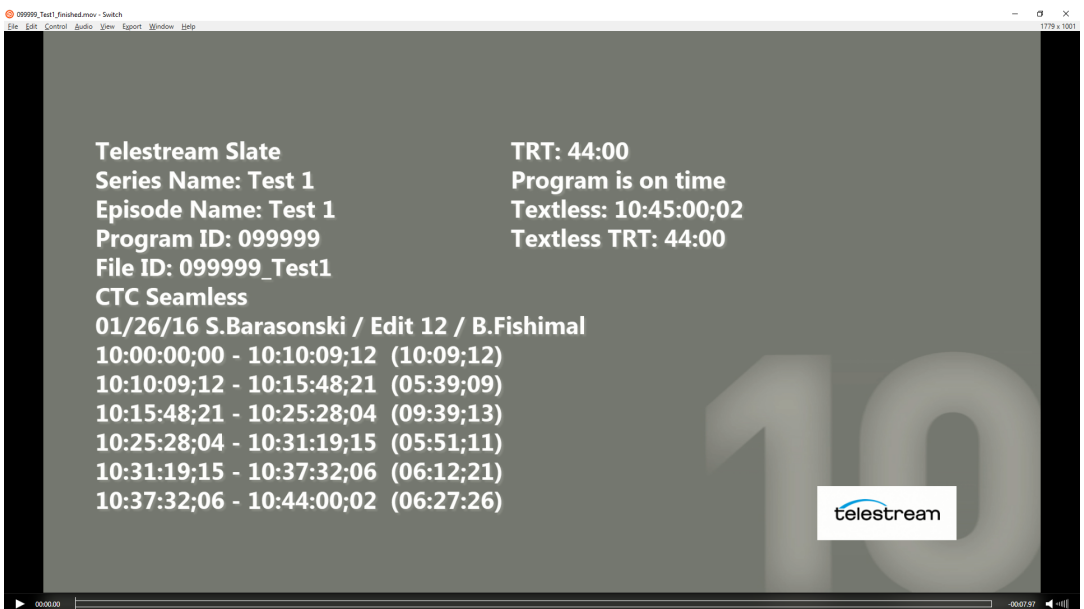
Activate and Test the Workflow

The last step is to activate the workflow and test it with your media files. A typical resulting slate video screen shot with embedded text derived from a workorder is shown below.

Starting Slate Video



Slate Video with Embedded Text



Copyright and Trademark Notice

©2017 Telestream®, LLC. All rights reserved. No part of this publication may be reproduced, transmitted, transcribed, altered, or translated into any languages without written permission of Telestream, Inc. Information and specifications in this document are subject to change without notice and do not represent a commitment on the part of Telestream.

Telestream, CaptionMaker, Episode, Flip4Mac, FlipFactory, Flip Player, Lightspeed, ScreenFlow, Switch, Vantage, Wirecast, Gameshow, GraphicsFactory, MetaFlip, and Split-and-Stitch are registered trademarks and MacCaption, e-Captioning, Pipeline, Post Producer, Tempo, TrafficManager, VidChecker, and VOD Producer are trademarks of Telestream, LLC. All other trademarks are the property of their respective owners.

All other brand, product, and company names are the property of their respective owners and are used only for identification purposes.

