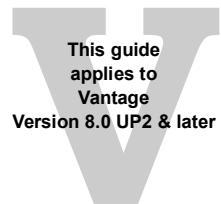


Using Vantage with a Cloud Port Designer License



Synopsis.....	2
Vantage Resources	2
Quick Start.....	3
Vantage Cloud Port Overview.....	4
Adding a Cloud Port Designer License.....	6
Enabling Vantage Workflows to Execute in Telestream Cloud.....	7
Resolving Unsupported Cloud Port Mode Configurations.....	9
Contacting Telestream	10
Copyright and Trademark Notice	11

Note: This app note is written for video professionals who are familiar with using Vantage. To implement applications in Vantage, you should know how to create workflows and submit jobs. If you aren't familiar with Vantage, we suggest that you review the *Vantage User's Guide* and *Vantage Domain Management Guide* as needed.



Synopsis

Telestream's Vantage Cloud Port Designer license enables you to utilize Vantage Workflow Designer to design and deploy Vantage workflows that utilize Cloud Port features, enabling you to perform media processing in Telestream Cloud. These workflows include one or more Cloud-capable actions (in addition to on-premises actions) that you use to process your media in Telestream Cloud.

This guide provides information that you should know—and what tasks to perform—in order to get started quickly using Vantage in Telestream Cloud with just a Cloud Port Designer license.

The Cloud Port Designer license is intended for use in new, single-node Vantage domains where video processing is performed using Vantage Cloud Port and Telestream Cloud.

Note: If you have a Vantage 8.0 UP2 domain or later with at least one license which allows workflows to be activated—for example, Transcode (V-XCODE-SW) or higher—adding a Cloud Port Designer license will not provide additional functionality. Telestream does not recommend purchasing a Cloud Port Designer license and adding it to an existing, licensed Vantage domain.

You may elect to add licenses for other, on-premises features to your Vantage domain to meet your operating requirements.

Vantage Resources

This app note assumes you are familiar with creating and configuring workflows to process media in Vantage. Detailed descriptions of how to perform some of the tasks required to use Vantage Cloud Port are not explained here. Please refer to the appropriate guide for comprehensive information regarding tasks you're unfamiliar with or need help completing.

For a comprehensive resource on using Vantage Cloud Port in Vantage using hosted workflows in Telestream Cloud, refer to the [Vantage Cloud Port User Guide](#) and the [Telestream Cloud Hosted Workflows Guide](#). Both are published on the Telestream web site.

In Vantage Workflow Designer and the Domain Management console, you can view their respective guides by clicking the ? icon in the upper right corner.

These guides are also published on the Telestream web site:

- [Vantage Domain Management Guide](#)
- [Vantage User's Guide](#)

Quick Start

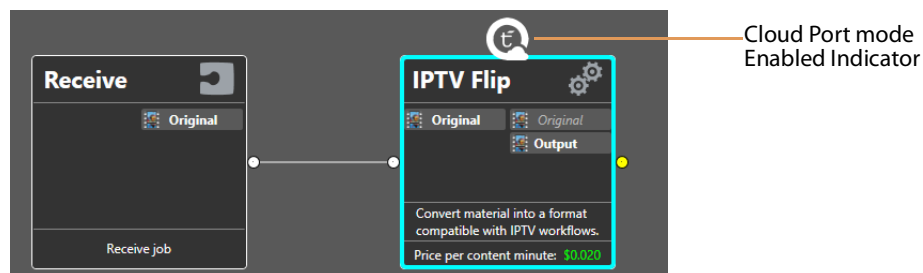
Here's how to get your Vantage domain up and running with Vantage Cloud Port—to design and use Vantage workflows that can perform media processing in Telestream Cloud. These tasks involve use of the Vantage Domain Console, Vantage Workflow Designer, and the Telestream Cloud web console.

Complete each of these tasks if you haven't already done so:

1. *Read the Vantage Cloud Port Overview*—To learn how Vantage integrates with Telestream Cloud, read the [Vantage Cloud Port Overview](#).
2. *Install Vantage*—Install Vantage 8.0 UP2 as a single-node domain. For detailed instructions, platform requirements and troubleshooting, read *Installing Vantage* in the ([Vantage Domain Management Guide](#)). The *Vantage 8.0 Update Pack 2 Installation Quick Start* is also provided in your Vantage installer package.

Note: If you plan to deploy Telestream Cloud-hosted workflows, read the [Telestream Cloud Hosted Workflows User Guide](#), published on the Telestream web site.

3. *Add a Vantage Cloud Port Designer license*—Add the license that you received from Telestream Licensing to your Vantage domain. Basic directions are in the email; see [Adding a Cloud Port Designer License](#) for details.
4. *Establish a third-party Cloud storage account*—Create a Cloud storage account. Telestream Cloud works with Amazon AWS | Google Cloud Platform | Microsoft Azure. See *Creating a Cloud Storage Account* in the [Vantage Cloud Port User Guide](#).
5. *Set Up a Telestream Cloud account*—establish a Telestream Cloud account at cloud.telestream.net, which is required to enable Cloud Port in your domain. See *Creating Your Telestream Cloud Account* in the [Vantage Cloud Port User Guide](#).
6. *Register your Telestream Cloud account in Vantage*—Configure your domain to access your Telestream Cloud account. See *Configuring Vantage for Vantage Cloud Port* in the [Vantage Cloud Port User Guide](#).
7. *Put Cloud Port-capable actions into Cloud Port mode*— Enable Cloud-capable actions in your workflow to execute in Telestream Cloud. See [Enabling Vantage Workflows to Execute in Telestream Cloud](#). When enabled, they display a badge:



Note: Common errors include license problems and actions and configurations in Cloud Port workflows. See [Resolving Unsupported Cloud Port Mode Configurations](#) for assistance. For help resolving problems, obtain assistance by [Contacting Telestream](#).

When you have completed these tasks, your Vantage domain is ready to go.

Vantage Cloud Port Overview

Vantage Cloud Port is a licensed, Vantage option that enables a set of Vantage services that are hosted and executed in Telestream Cloud—by Cloud-capable actions in on-premises or Telestream Cloud-hosted Vantage workflows. These actions enable Vantage domains to leverage additional Cloud processing on demand, whenever workload peaks or other requirements demand it.

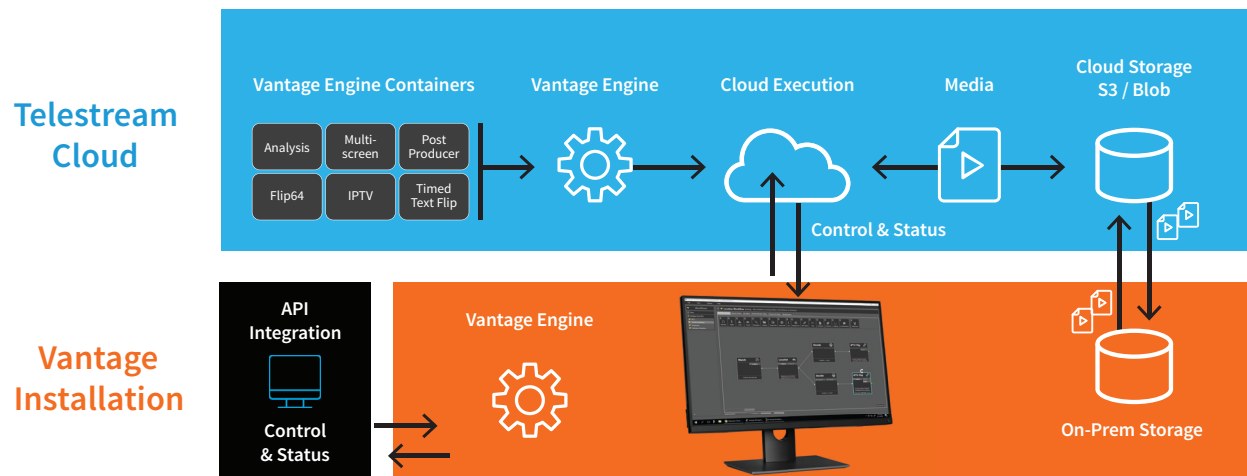
With the advent of Vantage Cloud Port, the concept of a Vantage domain expands to include all Telestream Cloud components that inter-operate with an on-premises Vantage domain.

Understanding the Types of Vantage Workflows

When Cloud Port is enabled in a Vantage domain, the scope of Vantage expands to include Telestream Cloud, and two types of workflows may be utilized. All workflows are designed in Workflow Designer, some actions require optional licensing.

Hybrid Workflows

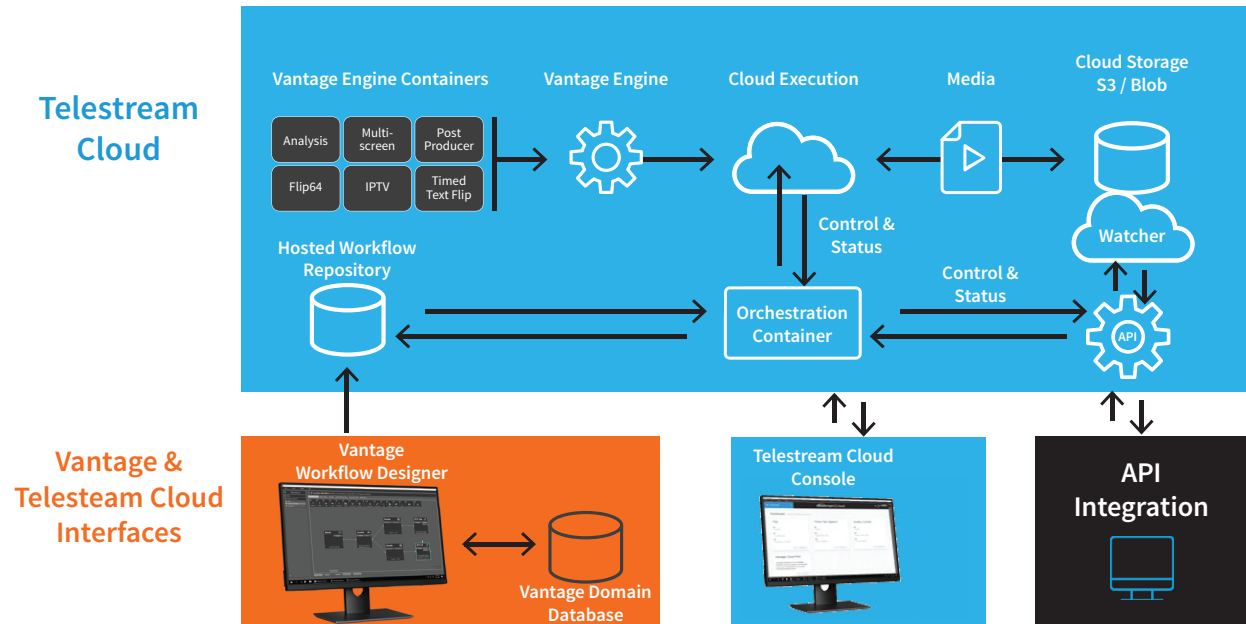
Hybrid Workflows are workflows that are hosted directly in an on-premises Vantage domain and managed in Workflow Designer.



In addition to Vantage actions that only execute on-premises, these workflows include cloud-capable actions, which may execute in Telestream Cloud when in Cloud Port mode, and/or Cloud Flip | Cloud QC | Cloud Speech | Location actions, which execute projects implemented in Telestream Cloud.

Hosted Workflows


Hosted Workflows are workflows exported to Telestream Cloud and managed in the Telestream Cloud console.



Jobs are either submitted via the Telestream Cloud console or a Telestream Cloud API-based client program, and action execution occurs exclusively in Telestream Cloud. These workflows can only be comprised of cloud-capable actions, which all execute in Telestream Cloud. Hosted workflows can not include Cloud actions: Cloud Flip | Cloud QC | Cloud Speech | Location.

Adding a Cloud Port Designer License

When you receive a Vantage Cloud Port Designer license (an XML file), install it in your Vantage domain and activate it using these steps:

1. First, store a copy of the license file in a safe place.
Telestream recommends that you archive a copy, in case you need to re-install or restore the license later.
2. Place the license file on the Vantage domain server or in a location that is accessible to the server, and note the server and path where the file is stored.
3. Start the Vantage Management Console by double-clicking its desktop icon.
4. In the left panel, choose Licenses.
5. In the right panel, click the Add/Update a license button  in the toolbar to display the Add/Update License dialog.
6. Navigate to the folder containing the licenses.
7. Select the license and click Open.
Vantage prompts you to accept the license agreement. If an error message displays or you have other problems, see [Troubleshooting License Installation Problems](#) in the [Vantage Domain Management and Installation Guide](#).
8. Click *I Accept...* if you agree to the license terms, and click OK
9. After importing the license, be sure to restart Workflow Designer before continuing your work.

When activation is complete, the license is stored in the Vantage domain database for use by all Vantage services and client programs in the domain.

Note: If you need help, see the [Managing Licenses](#) topics in the [Vantage Domain Management Guide](#) or by clicking the ? icon in the upper right corner of the Vantage Management Console.

Enabling Vantage Workflows to Execute in Telestream Cloud

You use Workflow Designer to create, configure, use, manage, and monitor Vantage Cloud Port workflows to process your media in Telestream Cloud. Cloud Port workflows may be stored on-premises or in Telestream Cloud.

Vantage provides Cloud-based services to execute selected actions in Telestream Cloud instead of executing them on-premises. These actions are referred to as *Cloud-capable*. You set up these actions to run in Cloud Port mode on a workflow-by-workflow basis. Cloud-capable actions can also run (be executed by services) on-premises.

You can use these Cloud-capable actions in your workflows:

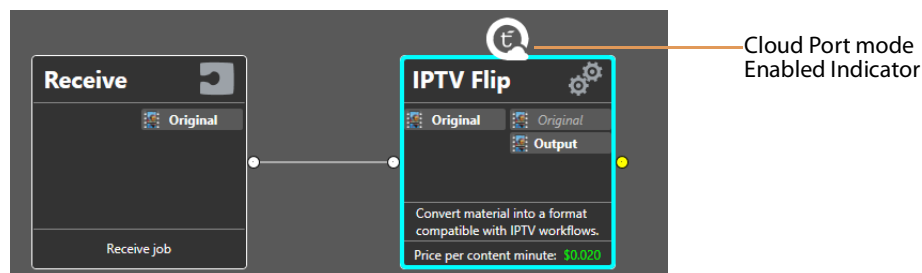
- Analyze
- Conform
- Flip64
- IPTV Flip
- Multiscreen Flip
- Tempo
- Timed Text Flip

Note: The actions in the Cloud category in Workflow Designer are *connectors* to Telestream Cloud services that Vantage can utilize. These are not *Cloud-capable* actions.

Note: Before you can set up Cloud-capable actions to run in Telestream Cloud, you must have established a third-party Cloud account and registered it in Vantage, and you must have established a Telestream Cloud account. See [Quick Start](#) for these tasks.

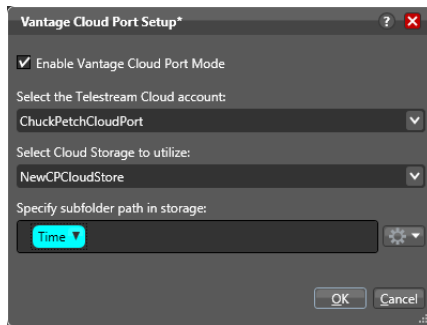
Cloud-capable actions display the *Cloud Port mode* menu item in their context menu. (If Vantage displays an error when you attempt to enable Cloud Port mode, make sure you have added a Vantage Cloud Port account in the Vantage Management Console).

Cloud-capable actions display a Telestream Cloud icon when Cloud Port mode is enabled, as shown below.



To put Cloud-capable actions into Cloud Port mode, follow these steps:

1. Create a workflow that contains any Cloud-capable actions.
2. Right-click on the action and select Cloud Port mode to display the Vantage Cloud Port Setup dialog:



3. Configure the settings:

Enable Vantage Cloud Port Mode. Check to enable Cloud Port mode in this workflow.

Select the Telestream Cloud Account. Specifies the Telestream Cloud account to utilize, which must be specified in the Vantage Management Console (Settings & Options > Telestream Cloud).

Select Cloud Storage to Utilize. Specifies the cloud storage bucket to utilize, which must be specified as an address in the Vantage Folder Address Book.

Note: The folder you create in the Vantage Folder Address Book must use exactly the same name as the storage you identify in the Telestream Cloud account. This is required to provide translation of the signed URL specifying the location of the cloud-stored media to a Vantage native URL usable by the subsequent action. If matching entries are not included in the Vantage Folder Address Book, the URL translation does not occur, and downstream actions may fail. See *Configuring Cloud Storage in the Vantage Folder Address Book* in the *Vantage User's Guide* for additional details.

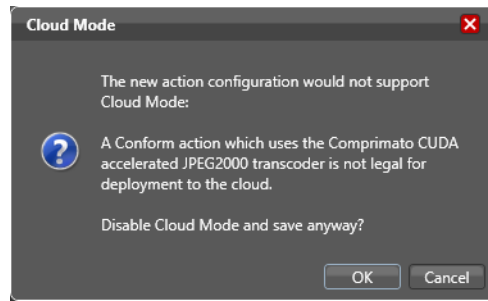
Specify Subfolder Path in Storage. Specifies an optional subfolder (bucket) path to use. May be statically specified and/or variables, date and time tokens may be applied.

1. Click OK to save the workflow with these changes and dismiss the dialog.

If you need help, see the *Managing Licenses* topics in the [Vantage User's Guide](#) or by clicking the ? icon in the upper right corner of Vantage Workflow Designer. When configuring actions via the action inspector, you can click the M icon to display detailed, contextual information about the panel you're working in.

Resolving Unsupported Cloud Port Mode Configurations

On occasion, you may configure an action in such a manner or specify a certain plugin (an encoder for example) that can not execute in the Cloud. In these situations, Vantage displays an error similar to this.



Reconfigure the action in a way (or using another extension) to enable it to run in the Cloud, or re-configure the workflow to execute the action on-premises.

Contacting Telestream

To obtain product information, technical support, or provide comments on this guide set, contact us using our web site, email, or phone number as listed in the table below.

Resource	Contact Information
Telestream Technical Support	Web Site: http://www.telestream.net/telestream-support
Telestream Cloud Support	Web Site: https://cloud.telestream.net Telephone: +1 (866) 233 3187 Email: cloudsupport@telestream.net
Vantage Technical Support	Web Site: http://www.telestream.net/telestream-support/vantage/support.htm Support Web Mail: http://www.telestream.net/telestream-support/vantage/contact-support.htm US Enterprise Product Support: (877) 257-6245 International Enterprise Support: +49 228 280 9141
Telestream	Web Site: www.telestream.net Sales and Marketing Email: info@telestream.net Telestream 848 Gold Flat Road Nevada City, CA. USA 95959
International Distributor Support	See www.telestream.net for your regional authorized Telestream distributor.
Telestream Technical Writers	Email: techwriter@telestream.net If you have comments or suggestions about this guide or other Telestream guides, please email us.

Copyright and Trademark Notice

©2020 Telestream®, LLC. All rights reserved. No part of this publication may be reproduced, transmitted, transcribed, altered, or translated into any languages without written permission of Telestream, Inc. Information and specifications in this document are subject to change without notice and do not represent a commitment on the part of Telestream.

Telestream, CaptionMaker, Cerify, Episode, Flip4Mac, FlipFactory, Flip Player, Gameshow, GraphicsFactory, Lightspeed, MetaFlip, Post Producer, Prism, ScreenFlow, Split-and-Stitch, Switch, Tempo, TrafficManager, Vantage, VOD Producer, and Wirecast are registered trademarks and Aurora, Cricket, e-Captioning, Inspector, iQ, iVMS, iVMS ASM, MacCaption, Pipeline, Sentry, Surveyor, Vantage Cloud Port, CaptureVU, Cerify, FlexVU, Prism, Sentry, Stay Genlock, Aurora, and Vidchecker are trademarks of Telestream, LLC and its Affiliates. All other trademarks are the property of their respective owners.

All other brand, product, and company names are the property of their respective owners and are used only for identification purposes.

