

Using the Vantage[®] Database Deployment Utility



Note: This guide is written for video professionals who are familiar with using Vantage. To implement applications in Vantage, you should know how to create workflows and submit jobs. If you aren't familiar with Vantage, we suggest that you review the *Vantage User's Guide* and *Vantage Domain Management Guide* as needed.

- [Overview](#) 2
 - [Software Requirements](#) 2
 - [Licensing](#) 2
 - [Features](#) 2
 - [Limitations](#) 2
 - [Prerequisites for Instance Installation](#) 3
- [Using the Database Deployment Utility](#) 6
- [Installing Vantage](#) 11
- [Copyright and Trademark Notice](#) 12



Overview

The Vantage Database Deployment Utility allows you to upgrade or install a Vantage database into an existing SQL 2012, 2014, 2016, or 2019 database instance. The utility auto-discovers SQL database instances on your network and allows you to select the one you wish to install the Vantage database into.

Because this utility installs a Vantage domain database into an existing SQL instance, it allows you to use the existing database name and password. This allows you to create Vantage systems using custom instance names other than *VANTAGE*.

Software Requirements

- The Vantage Database Deployment Utility works with Vantage version 8.1. Use the utility version that matches the Vantage version you plan to use or upgrade to.
- SQL Server Express or Standard, 2012, 2014, 2016, or 2019
- SQL Server Management Studio (free download)

Licensing

The Vantage Database Deployment Utility works with any Vantage 8.1 license level.

Features

- Installs a Vantage database into an existing Microsoft SQL instance. This allows custom database instance names and passwords. Users who need to distinguish among multiple domain databases by different instance names and passwords can do so.
- Upgrades existing Vantage database instances, making upgrades of standard, mirrored, and clustered databases much faster and easier.
- Re-installs a clean version of a Vantage database into an existing database.

Limitations

- If you plan to use Windows authentication when deploying a database using the Database Deployment Utility, you must also set the SQL Server service Log On to the same Windows account that you use for database authentication. To change the SQL Server service log on, select Start > Administrative Tools > Services > SQL Server > Properties > Log On > This account.
- These instructions do not cover the installation of SQL or the creation of the instance. Please refer to SQL documentation and contact Telestream for assistance if your Vantage installation includes a mirrored or clustered database configuration.

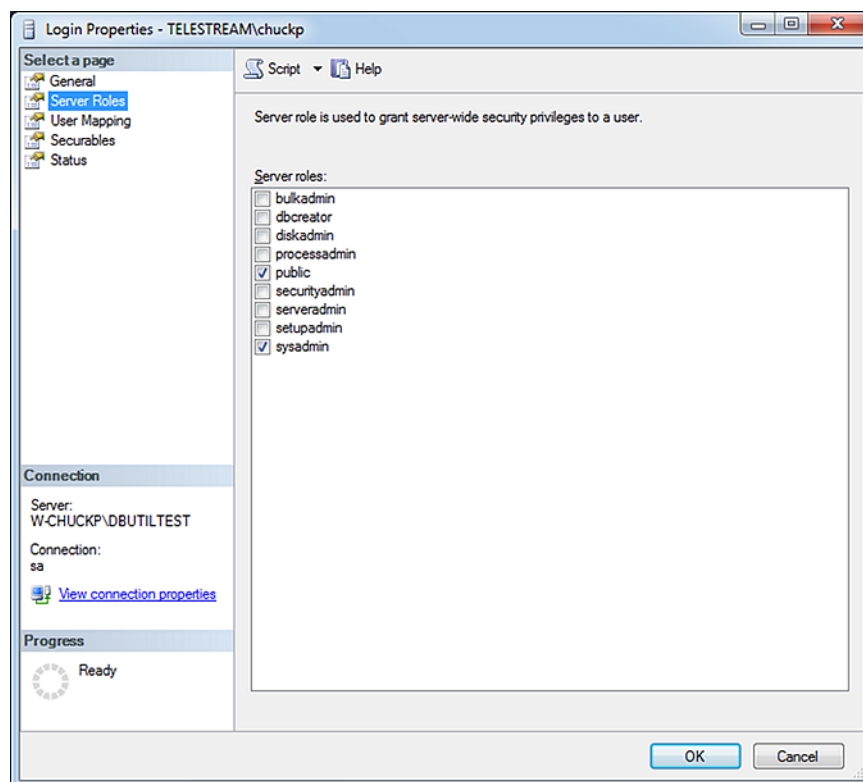
Prerequisites for Instance Installation

It is assumed you have already created a SQL database instance into which a Vantage database instance can be deployed. The database instance must meet certain prerequisites before you can use the Vantage utility to deploy a Vantage database instance:

- The SQL instance must be deployed as a named instance.
- The SQL instance must include a SQL or active directory user account. The user can be sa or another account, and any password may be used.
- The user account installing the Vantage database must have the *sysadmin* role assigned. The following steps explain how to assign a role.
- The user account running the Vantage database after it is installed can have the *db_owner* and *dbcreator* roles assigned instead of *sysadmin*, if you prefer the user to have lower privileges.

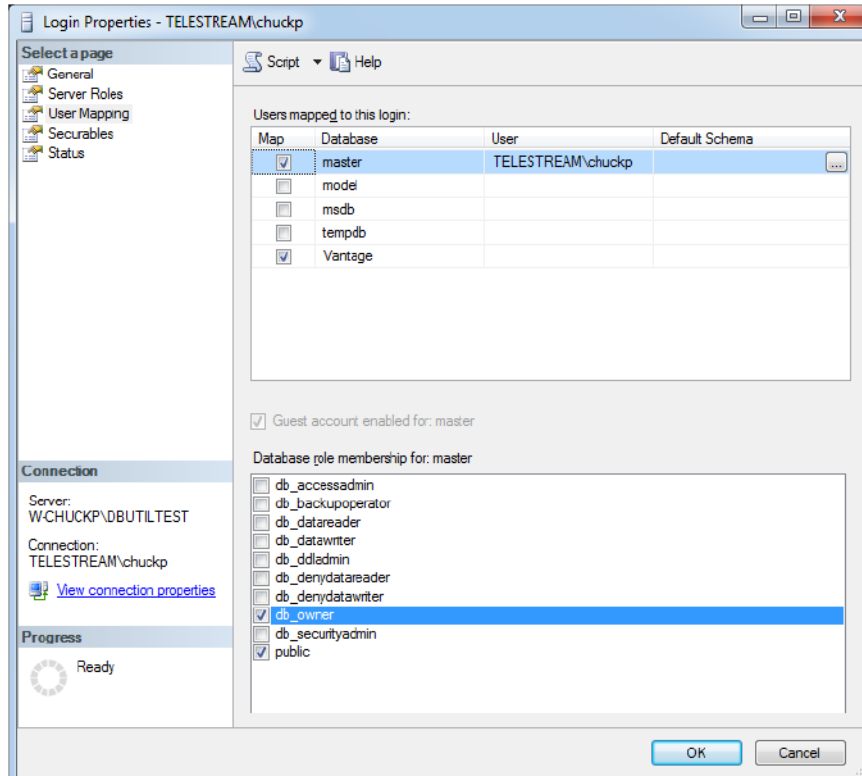
Configuring the Administrator Role

1. In the SQL Server Management Studio > Object Explorer panel, expand Security, and expand Logins.
2. Right-click the *sa* user or another user that you want to use as the administrator login, and select *Properties*.
3. Go to Server Roles and enable *sysadmin*. Click *OK*. This gives the user system administrator privileges for the database instance.

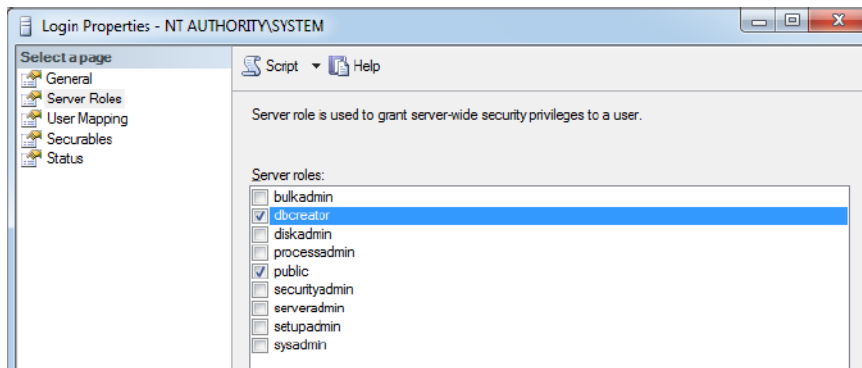


Configuring the Vantage User Role

1. Right-click the current Windows user and select *Properties*.
2. Click *User Mapping*. Check *master* or Vantage (if present) in the database column, and check *db_owner*. Click *OK*.



3. Right-click the Windows user and select *Properties* again.
4. Click *Server Roles* and check *dbcreator* to enable it. Click *OK*. This gives the current Windows user sufficient privileges to run the Vantage database instance after installation.



5. In the SSMS left panel, right-click the server name, and select *Properties*. Select *Memory* and set *Maximum server memory (in MB)* to 75% of the host system's memory. For example, if the system's memory is 8 GB (8192 MB), then the maximum server memory for SQL should be set to 6 GB (6144 MB, or in round numbers 6,000,000,000 bytes).
6. Click OK and select File > Exit to close the Microsoft SQL Server Management Studio.

Using the Database Deployment Utility

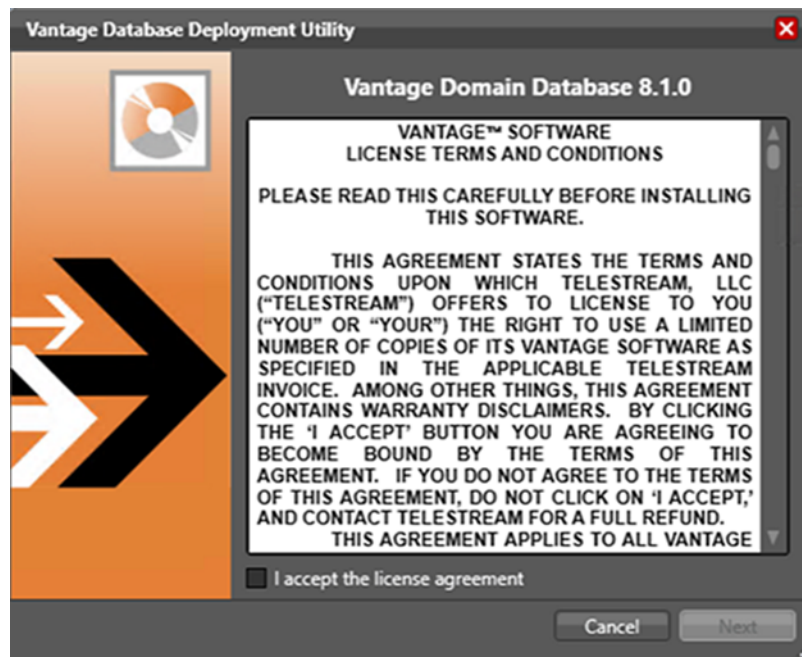
Following the steps provided in this section, you can use the Database Deployment Utility to perform these tasks:

- Upgrade an existing Vantage database to the current (8.1) structure while retaining existing contents.
- Attach an existing (detached) Vantage database to a SQL instance and upgrade the database to the current (8.1) structure while retaining existing contents.
- Install (or replace) a clean, new Vantage 8.1 database into a SQL instance. If replacing an existing database, this option deletes all existing contents.

Note: The word “detached” is defined here as follows: When Vantage 7.1 (or earlier) is uninstalled, the Vantage database files physically remain where they were installed in a standard or custom location, but the database can become disassociated or “detached” from the SQL instance. You can use the Database Deployment Utility to browse and select the folder containing the database, which you can then reattach and upgrade. For Vantage 7.2, 8.0, and 8.1, the Vantage database no longer becomes detached when Vantage is uninstalled.

1. Launch the *DatabaseDeploymentUtility.exe* file.

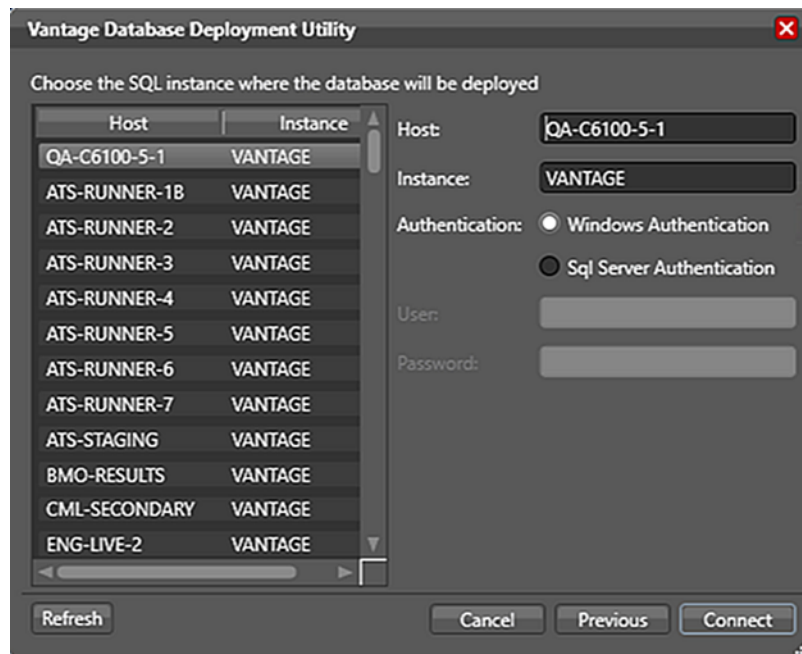
The license agreement opens.



2. Check the *I accept the license agreement* check box, and click *Next*.

A list of available SQL database instances opens.

3. Select a Host and Instance in the left panel.



4. In the right panel, choose an Authentication method for logging into SQL Server, either Windows or SQL Server.

No matter which authentication method you choose, you must have the *sysadmin* role assigned to install a Vantage database instance.

IMPORTANT: If you use Windows authentication, you must set the SQL Server service Log On to the same Windows account that you use for database authentication. Otherwise, you will receive a logon error message.

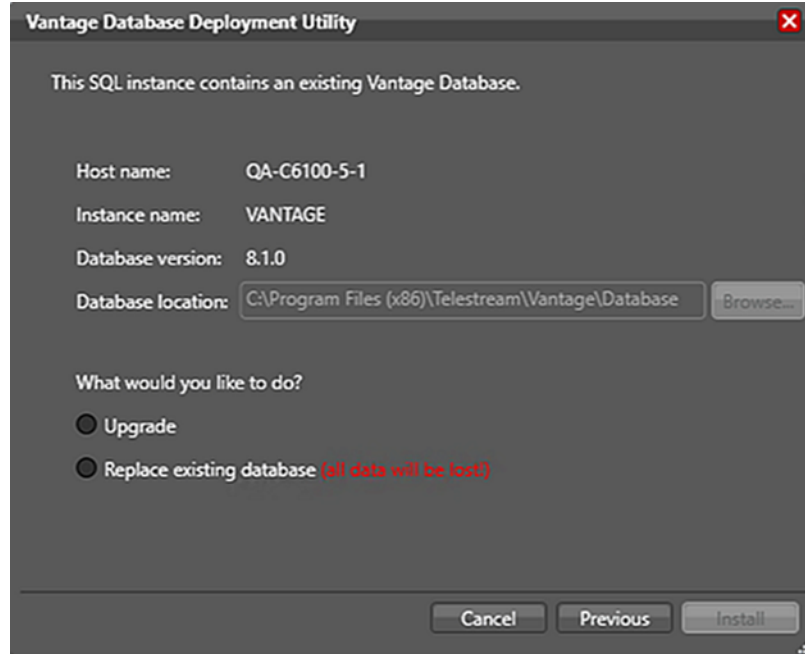
To change the SQL Server service Log On, select Start > Administrative Tools > Services > SQL Server > Properties > Log On > This account.

5. Enter the authentication *User* name and *Password*, if required, and click *Connect*.

6. The utility searches for SQL instances with Vantage databases and reports on its findings. Depending on the dialog displayed, you may select one of the following deployments:

– **Attached Vantage Database Found—Upgrade or Replace**

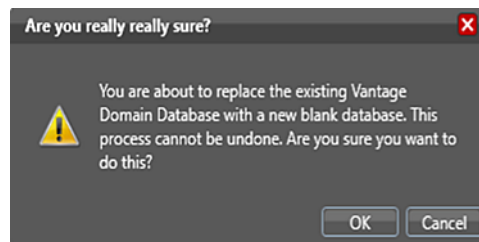
Finds a SQL Server instance with an attached, upgradeable Vantage database. In the dialog, notice that the Database location field is filled in and the *Browse* button is disabled. In this instance, you can choose *Upgrade* to upgrade the attached Vantage database, or you can choose *Replace existing database* in which case all existing data will be lost.



Upgrade—Select this if you want to retain the domain database contents but upgrade to the current Vantage database structure. If you select *Upgrade* and then select *Install*, the database is upgraded to 8.1 and the installation complete message appears.

Note: You cannot downgrade a database; upgrading moves a database forward from previous versions to the current version.

Replace existing database—Select this if you want to completely overwrite the current database contents. If you select *Replace existing database* and then click *Install*, a warning message opens as shown to advise you that your database will be completely erased and replaced if you continue. Click *OK* to continue.

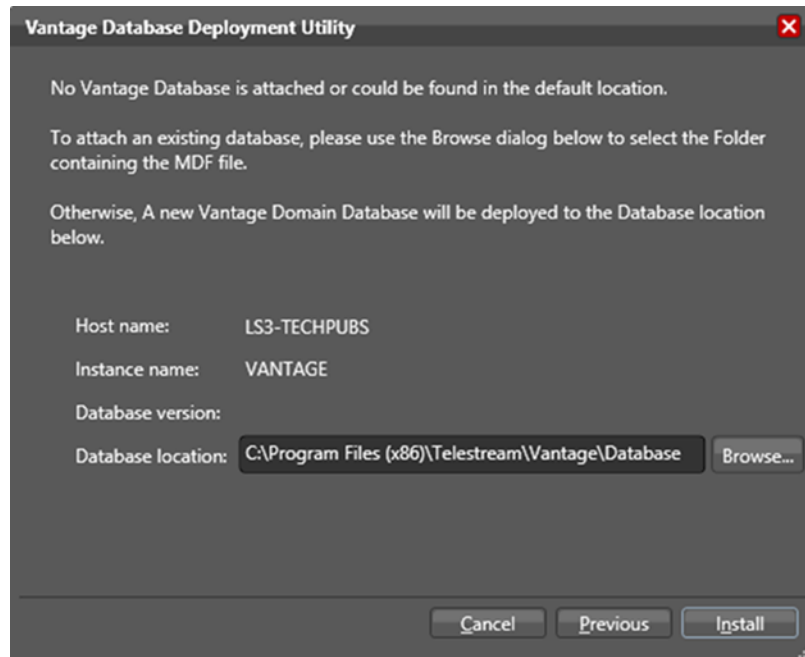


Warning: If you select *Replace existing database*, all Vantage database contents WILL BE ERASED and replaced. If you want to keep the current database contents, back up your database prior to using the database deployment utility by using the Vantage Management Console. Backing up the current database before upgrading is strongly recommended, but it is not required. For

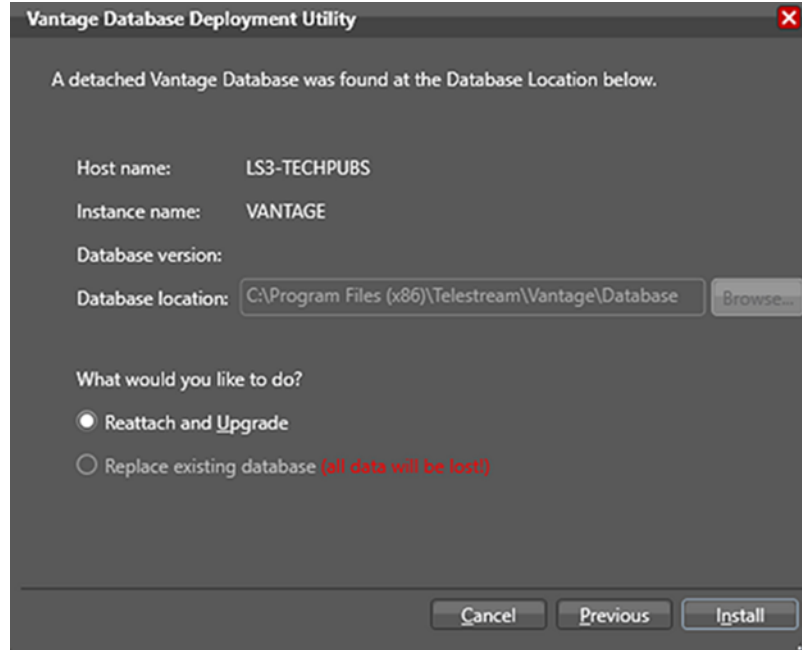
information regarding how to backup an existing database, refer to *Backing up the Existing Database*, in the *Vantage Database Setup* application note.

– **No Vantage Database Found—Select and Upgrade an Existing Detached Database**

Finds no attached Vantage database, but allows you to browse to a folder with an existing Vantage database for reattachment then upgrade to 8.1. Enter your existing database location.



If you enter or browse to a database location and a database is found in that location, the **Reattach and Upgrade** dialog is immediately displayed. If the Vantage database is detached, the utility attaches it to SQL and upgrades it.



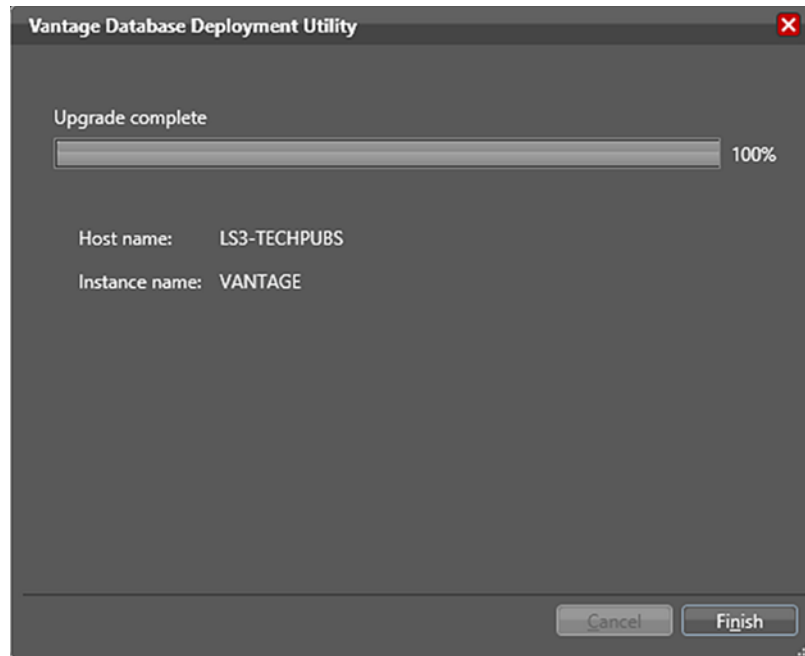
Note: In the dialog the *Browse* button is unavailable, as well as the *Replace existing database* option. The Database location field is auto populated with the location of the database that you specified in the previous dialog.

Select *Reattach and Upgrade* then *Install*. After reattachment, the database is upgraded to 8.1 and the installation complete message appears.

– **No Vantage Database Found—Install a new Database**

Enter a database location or *Browse* to a folder where you want the database to reside. Click *Install*. The utility will recognize that this folder has no database, and will deploy a new Vantage database in this location.

7. A window opens to show progress and advises you when the installation or, depending on your selection, when the upgrade is complete.



Click *Finish* when the progress window indicates that the installation or the upgrade has completed.

Installing Vantage

Now that you have a new or upgraded Vantage database, you are ready to install or upgrade all of the Vantage clients and components. For detailed instructions for a new Vantage installation, see the Installing Vantage chapter of the Vantage Domain Management Guide. For detailed instructions for upgrading Vantage, see the Upgrading and Modifying Vantage chapter in the Vantage Domain Management Guide.

Copyright and Trademark Notice

Copyright © 2022 Telestream, LLC and its Affiliates. All rights reserved. No part of this publication may be reproduced, transmitted, transcribed, altered, or translated into any languages without written permission of Telestream, LLC. Information and specifications in this document are subject to change without notice and do not represent a commitment on the part of Telestream. Specifications subject to change without notice.

Telestream, CaptionMaker, Cerify, DIVA, Episode, Flip4Mac, FlipFactory, Flip Player, GraphicsFactory, Kumulate, Lightspeed, MetaFlip, Post Producer, ScreenFlow, Switch, Tempo, TrafficManager, Vantage, VOD Producer, and Wirecast are registered trademarks and Aurora, ContentAgent, Cricket, e-Captioning, Inspector, iQ, iVMS, iVMS ASM, MacCaption, Pipeline, Sentry, Surveyor, Vantage Cloud Port, CaptureVU, FlexVU, PRISM, Sentry, Stay Genlock, Aurora, and Vidchecker are trademarks of Telestream, LLC and its Affiliates. All other trademarks are the property of their respective owners.

All other brand, product, and company names are the property of their respective owners and are used only for identification purposes.