



Dashboard Guide



Copyrights and Trademark Notices

Telestream. Copyright © 2021 Telestream, LLC and its Affiliates. All rights reserved. No part of this publication may be reproduced, transmitted, transcribed, altered, or translated into any languages without written permission of Telestream, LLC. Information and specifications in this document are subject to change without notice and do not represent a commitment on the part of Telestream. Specifications subject to change without notice.

Telestream, CaptionMaker, Cerify, DIVA, Episode, Flip4Mac, FlipFactory, Flip Player, GraphicsFactory, Kumulate, Lightspeed, MetaFlip, Post Producer, ScreenFlow, Switch, Tempo, TrafficManager, Vantage, VOD Producer, and Wirecast are registered trademarks and Aurora, ContentAgent, Cricket, e-Captioning, Inspector, iQ, iVMS, iVMS ASM, MacCaption, Pipeline, Sentry, Surveyor, Vantage Cloud Port, CaptureVU, FlexVU, PRISM, Sentry, Stay Genlock, Aurora, and Vidchecker are trademarks of Telestream, LLC and its Affiliates. All other trademarks are the property of their respective owners.

Adobe. Adobe® HTTP Dynamic Streaming Copyright © 2014 Adobe Systems. All rights reserved.

Apple. QuickTime, MacOS X, and Safari are trademarks of Apple, Inc. Bonjour, the Bonjour logo, and the Bonjour symbol are trademarks of Apple, Inc.

Avid. Portions of this product Copyright 2012 Avid Technology, Inc.

CoreOS. Developers of ETCD.

Dolby. Dolby and the double-D symbol are registered trademarks of Dolby Laboratories Licensing Corporation.

Fraunhofer IIS and Thomson Multimedia. MPEG Layer-3 audio coding technology licensed from Fraunhofer IIS and Thomson Multimedia.

Google. VP6 and VP8 Copyright Google Inc. 2014 All rights reserved.

MainConcept. MainConcept is a registered trademark of MainConcept LLC and MainConcept AG. Copyright 2004 MainConcept Multimedia Technologies.

Manzanita. Manzanita is a registered trademark of Manzanita Systems, Inc.

MCW. HEVC Decoding software licensed from MCW.

MediaInfo. Copyright © 2002-2013 MediaArea.net SARL. All rights reserved.

THIS SOFTWARE IS PROVIDED BY THE COPYRIGHT HOLDERS AND CONTRIBUTORS "AS IS" AND ANY EXPRESS OR IMPLIED WARRANTIES, INCLUDING, BUT NOT LIMITED TO, THE IMPLIED WARRANTIES OF MERCHANTABILITY AND FITNESS FOR A PARTICULAR PURPOSE ARE DISCLAIMED. IN NO EVENT SHALL THE COPYRIGHT HOLDER OR CONTRIBUTORS BE LIABLE FOR ANY DIRECT, INDIRECT, INCIDENTAL, SPECIAL, EXEMPLARY, OR CONSEQUENTIAL DAMAGES (INCLUDING, BUT NOT LIMITED TO, PROCUREMENT OF SUBSTITUTE GOODS OR SERVICES; LOSS OF USE, DATA, OR PROFITS; OR BUSINESS INTERRUPTION) HOWEVER CAUSED AND ON ANY THEORY OF LIABILITY,

WHETHER IN CONTRACT, STRICT LIABILITY, OR TORT (INCLUDING NEGLIGENCE OR OTHERWISE) ARISING IN ANY WAY OUT OF THE USE OF THIS SOFTWARE, EVEN IF ADVISED OF THE POSSIBILITY OF SUCH DAMAGE.

Microsoft. Microsoft, Windows NT|2000|XP|XP Professional|Server 2003|Server 2008 |Server 2012|Server 2016|Server 2019, Windows 7, Windows 8, Windows 10, Media Player, Media Encoder, .Net, Internet Explorer, SQL Server 2005|2008|2012|2016|2019, and Windows Media Technologies are trademarks of Microsoft Corporation.

NLOG, MIT, Apache, Google. NLog open source code used in this product under MIT License and Apache License is copyright © 2014-2016 by Google, Inc., © 2016 by Stabzs, © 2015 by Hiro, Sjoerd Tieleman, © 2016 by Denis Pushkarev, © 2015 by Dash Industry Forum. All rights reserved.

SharpSSH2. SharpSSH2 Copyright (c) 2008, Ryan Faircloth. All rights reserved. Redistribution and use in source and binary forms, with or without modification, are permitted provided that the following conditions are met:

Redistributions of source code must retain the above copyright notice, this list of conditions and the following disclaimer.

Redistributions in binary form must reproduce the above copyright notice, this list of conditions and the following disclaimer in the documentation and/or other materials provided with the distribution.

Neither the name of Diversified Sales and Service, Inc. nor the names of its contributors may be used to endorse or promote products derived from this software without specific prior written permission.

THIS SOFTWARE IS PROVIDED BY THE COPYRIGHT HOLDERS AND CONTRIBUTORS "AS IS" AND ANY EXPRESS OR IMPLIED WARRANTIES, INCLUDING, BUT NOT LIMITED TO, THE IMPLIED WARRANTIES OF MERCHANTABILITY AND FITNESS FOR A PARTICULAR PURPOSE ARE DISCLAIMED. IN NO EVENT SHALL THE COPYRIGHT OWNER OR CONTRIBUTORS BE LIABLE FOR ANY DIRECT, INDIRECT, INCIDENTAL, SPECIAL, EXEMPLARY, OR CONSEQUENTIAL DAMAGES (INCLUDING, BUT NOT LIMITED TO, PROCUREMENT OF SUBSTITUTE GOODS OR SERVICES; LOSS OF USE, DATA, OR PROFITS; OR BUSINESS INTERRUPTION) HOWEVER CAUSED AND ON ANY THEORY OF LIABILITY, WHETHER IN CONTRACT, STRICT LIABILITY, OR TORT (INCLUDING NEGLIGENCE OR OTHERWISE) ARISING IN ANY WAY OUT OF THE USE OF THIS SOFTWARE, EVEN IF ADVISED OF THE POSSIBILITY OF SUCH DAMAGE.

Swagger. Licensed from SmartBear.

Telerik. RadControls for ASP.NET AJAX copyright Telerik All rights reserved.

VoiceAge. This product is manufactured by Telestream under license from VoiceAge Corporation.

x264 LLC. The product is manufactured by Telestream under license from x264 LLC.

Xceed. The Software is Copyright ©1994-2012 Xceed Software Inc., all rights reserved.

ZLIB. Copyright (C) 1995-2013 Jean-loup Gailly and Mark Adler.



Other brands, product names, and company names are trademarks of their respective holders, and are used for identification purpose only.

MPEG Disclaimers

MPEGLA MPEG2 Patent

ANY USE OF THIS PRODUCT IN ANY MANNER OTHER THAN PERSONAL USE THAT COMPLIES WITH THE MPEG-2 STANDARD FOR ENCODING VIDEO INFORMATION FOR PACKAGED MEDIA IS EXPRESSLY PROHIBITED WITHOUT A LICENSE UNDER APPLICABLE PATENTS IN THE MPEG-2 PATENT PORTFOLIO, WHICH LICENSE IS AVAILABLE FROM MPEG LA, LLC, 4600 S. Ulster Street, Suite 400, Denver, Colorado 80237 U.S.A.

MPEGLA MPEG4 VISUAL

THIS PRODUCT IS LICENSED UNDER THE MPEG-4 VISUAL PATENT PORTFOLIO LICENSE FOR THE PERSONAL AND NON-COMMERCIAL USE OF A CONSUMER FOR (i) ENCODING VIDEO IN COMPLIANCE WITH THE MPEG-4 VISUAL STANDARD ("MPEG-4 VIDEO") AND/OR (ii) DECODING MPEG-4 VIDEO THAT WAS ENCODED BY A CONSUMER ENGAGED IN A PERSONAL AND NON-COMMERCIAL ACTIVITY AND/OR WAS OBTAINED FROM A VIDEO PROVIDER LICENSE IS GRANTED OR SHALL BE IMPLIED FOR ANY OTHER USE. ADDITIONAL INFORMATION INCLUDING THAT RELATING TO PROMOTIONAL, INTERNAL AND COMMERCIAL USES AND LICENSING MAY BE OBTAINED FROM MPEG LA, LLC. SEE [HTTP://WWW.MPEGLA.COM](http://www.mpegla.com).

MPEGLA AVC

THIS PRODUCT IS LICENSED UNDER THE AVC PATENT PORTFOLIO LICENSE FOR THE PERSONAL USE OF A CONSUMER OR OTHER USES IN WHICH IT DOES NOT RECEIVE REMUNERATION TO (i) ENCODE VIDEO IN COMPLIANCE WITH THE AVC STANDARD ("AVC VIDEO") AND/OR (ii) DECODE AVC VIDEO THAT WAS ENCODED BY A CONSUMER ENGAGED IN A PERSONAL ACTIVITY AND/OR WAS OBTAINED FROM A VIDEO PROVIDER LICENSED TO PROVIDE AVC VIDEO. NO LICENSE IS GRANTED OR SHALL BE IMPLIED FOR ANY OTHER USE. ADDITIONAL INFORMATION MAY BE OBTAINED FROM MPEG LA, L.L.C. SEE [HTTP://WWW.MPEGLA.COM](http://www.mpegla.com).

MPEG4 SYSTEMS

THIS PRODUCT IS LICENSED UNDER THE MPEG-4 SYSTEMS PATENT PORTFOLIO LICENSE FOR ENCODING IN COMPLIANCE WITH THE MPEG-4 SYSTEMS STANDARD, EXCEPT THAT AN ADDITIONAL LICENSE AND PAYMENT OF ROYALTIES ARE NECESSARY FOR ENCODING IN CONNECTION WITH (i) DATA STORED OR REPLICATED IN PHYSICAL MEDIA WHICH IS PAID FOR ON A TITLE BY TITLE BASIS AND/OR (ii) DATA WHICH IS PAID FOR ON A TITLE BY TITLE BASIS AND IS TRANSMITTED TO AN END USER FOR PERMANENT STORAGE AND/OR USE. SUCH ADDITIONAL LICENSE MAY BE OBTAINED FROM MPEG LA, LLC. SEE [HTTP://WWW.MPEGLA.COM](http://www.mpeg-la.com) FOR ADDITIONAL DETAILS.

Limited Warranty and Disclaimers

Telestream, LLC (the Company) warrants to the original registered end user that the product will perform as stated below for a period of one (1) year from the date of shipment from factory:

Hardware and Media—The Product hardware components, if any, including equipment supplied but not manufactured by the Company but NOT including any third party equipment that has been substituted by the Distributor for such equipment (the “Hardware”), will be free from defects in materials and workmanship under normal operating conditions and use.

Warranty Remedies

Your sole remedies under this limited warranty are as follows:

Hardware and Media—The Company will either repair or replace (at its option) any defective Hardware component or part, or Software Media, with new or like new Hardware components or Software Media. Components may not be necessarily the same, but will be of equivalent operation and quality.

Software Updates

Except as may be provided in a separate agreement between Telestream and You, if any, Telestream is under no obligation to maintain or support the Software and Telestream has no obligation to furnish you with any further assistance, technical support, documentation, software, update, upgrades, or information of any nature or kind.

Restrictions and Conditions of Limited Warranty

This Limited Warranty will be void and of no force and effect if (i) Product Hardware or Software Media, or any part thereof, is damaged due to abuse, misuse, alteration, neglect, or shipping, or as a result of service or modification by a party other than the Company, or (ii) Software is modified without the written consent of the Company.

Limitations of Warranties

THE EXPRESS WARRANTIES SET FORTH IN THIS AGREEMENT ARE IN LIEU OF ALL OTHER WARRANTIES, EXPRESS OR IMPLIED, INCLUDING, WITHOUT LIMITATION, ANY WARRANTIES OF MERCHANTABILITY OR FITNESS FOR A PARTICULAR PURPOSE. No oral or written information or advice given by the Company, its distributors, dealers or agents, shall increase the scope of this Limited Warranty or create any new warranties.

Geographical Limitation of Warranty—This limited warranty is valid only within the country in which the Product is purchased/licensed.

Limitations on Remedies—YOUR EXCLUSIVE REMEDIES, AND THE ENTIRE LIABILITY OF TELESTREAM, LLC WITH RESPECT TO THE PRODUCT, SHALL BE AS STATED IN THIS LIMITED WARRANTY. Your sole and exclusive remedy for any and all breaches of any Limited Warranty by the Company shall be the recovery of reasonable damages which, in the aggregate, shall not exceed the total amount of the combined license fee and purchase price paid by you for the Product.

Damages

TELESTREAM, LLC SHALL NOT BE LIABLE TO YOU FOR ANY DAMAGES, INCLUDING ANY LOST PROFITS, LOST SAVINGS, OR OTHER INCIDENTAL OR CONSEQUENTIAL DAMAGES ARISING OUT OF YOUR USE OR INABILITY TO USE THE PRODUCT, OR THE BREACH OF ANY EXPRESS OR IMPLIED WARRANTY, EVEN IF THE COMPANY HAS BEEN ADVISED OF THE POSSIBILITY OF THOSE DAMAGES, OR ANY REMEDY PROVIDED FAILS OF ITS ESSENTIAL PURPOSE.

Further information regarding this limited warranty may be obtained by writing:
Telestream, LLC
848 Gold Flat Road
Nevada City, CA 95959 USA

You can call Telestream during U. S. business hours via telephone at (530) 470-1300.

Regulatory Compliance

Electromagnetic Emissions: FCC Class A, EN 55022 Class A, EN 61000-3-2/-3-3, CISPR 22 Class A

Electromagnetic Immunity: EN 55024/CISPR 24, (EN 61000-4-2, EN 61000-4-3, EN 61000-4-4, EN 61000-4-5, EN 61000-4-6, EN 61000-4-8, EN 61000-4-11)

Safety: CSA/EN/IEC/UL 60950-1 Compliant, UL or CSA Listed (USA and Canada), CE Marking (Europe)

California Best Management Practices Regulations for Perchlorate Materials:
This Perchlorate warning applies only to products containing CR (Manganese Dioxide) Lithium coin cells. Perchlorate Material-special handling may apply. See www.dtsc.ca.gov/hazardouswaste/perchlorate.

Using the Vantage Dashboard Web App

Vantage Dashboard is a Web application that you can use to monitor and manage your domain from any computer, anywhere on your network, as long as that computer has a compatible browser.

Note: Vantage Dashboard is an option available with the Vantage System Web Dashboard license. Vantage Dashboard access requires that you enable the user management feature (see *Managing Vantage Users* in the *Vantage Domain Management Guide*).

The following topics describe how to use the Vantage Dashboard:

- [Overview](#)
- [Managing Vantage Dashboard Sessions](#)
- [Monitoring a Domain](#)
- [Managing Health of a Domain](#)
- [Administering the Domain](#)

Note: For instructions on how to install the Vantage Dashboard on your IIS server, see *Installing and Configuring Vantage Web Applications* in the *Vantage Domain Management Guide*.

Overview

Vantage Dashboard is designed to help domain administrators manage the entire Vantage domain, as opposed to other tools which allow management of domain components, such as jobs.

The Vantage Dashboard pages are designed to help you quickly assess the health of the domain and progressively dig into deeper detail as needed. For example, the Summary Status page allows you to quickly see the workflow completion success rate and the error rate on domain servers. The information on the Summary Status page can help you determine if it is more appropriate to troubleshoot a problem or evaluate system performance.

Other Vantage Dashboard pages allow you to view the status of servers, services, and jobs. When troubleshooting, it can be very helpful to determine if problems are system wide or confined to a server, a service, or a particular workflow. Vantage Dashboard provides the Web pages that allow you to quickly assess your domain from any Web client that has connectivity to your domain.

Managing Vantage Dashboard Sessions

When you start Vantage Dashboard in a Web browser, you establish a session with the Vantage domain. The following topics describe how to manage a Vantage Dashboard session:

- [Vantage Web Applications Browser Requirements](#)
- [Changing Web Applications Language and Date Format](#)
- [Starting the Vantage Dashboard](#)
- [Understanding the Vantage Dashboard Display](#)
- [Hiding and Displaying the Header Panel](#)
- [Managing the Menu Panel](#)
- [Sorting Lists in the Status Panel](#)
- [Logging Out](#)
- [Changing Your Vantage User Password](#)
- [Changing Vantage Domains](#)
- [Displaying Product Version Information](#)
- [Displaying Help](#)
- [Returning to the Welcome Page](#)
- [Troubleshooting Tip](#)

Vantage Web Applications Browser Requirements

Telestream supports a number of browsers for use with the Web Apps. For the current list, see the *Before You Install* chapter, *Vantage Web Applications Browser Requirements* in the *Vantage Domain Management Guide*.

Note: To use Vantage Dashboard with Internet Explorer, configure Explorer as described in the *Vantage Web Applications Browser Requirements* topic of the *Before You Install* chapter in the *Vantage Domain Management Guide*.

Changing Web Applications Language and Date Format

Vantage Web Applications detect the language and date format specified in your browser. For example, selecting English (United Kingdom) as the language displays UK spelling and date format (DD/MM/YYYY). Selecting English (US) as the language displays US spelling and date format (MM/DD/YYYY).

To change language and date formats, follow these steps:

Internet Explorer Language and Date

1. Open Internet Explorer.
2. Select the Tools menu and then Internet Options.
3. Click Languages.
4. Click Set Language Preferences.
5. Choose your language, for example, English (US) or English (United Kingdom).
6. Close and reopen the browser and access the web apps. Your language and date format should be displayed in the web apps.

Chrome Language and Date

1. Open Chrome.
2. Select the "three dots" menu at the far right, and then select Settings.
3. Expand the Advanced link at the bottom.
4. Under Languages, expand Language.
5. Click Add Languages, scroll and select a language, and click Add.
6. Click the menu button to the right of the desired language, check *Display Google Chrome in this language*, and click *Move to the top*. The language at the top should display your selected language.
7. Close and reopen the browser and check the web apps language and date format.

Starting the Vantage Dashboard

To start the Vantage Dashboard, open your web browser and navigate to the location of the Vantage Dashboard on an IIS server. There are 2 URLs that you can use to access the Vantage Dashboard:

- <http://<ServerName>/Vantage>
- <http://<ServerName>/Vantage/Dashboard>

The first URL displays links for all Vantage Web Applications (including the Vantage Dashboard), and the second URL directly starts the Vantage Dashboard. Replace *<ServerName>* with the name of the Vantage Dashboard host server (or its IP address). If you do not know the URL of the Vantage Dashboard, obtain it from your Vantage administrator or IT department.

Note: To access Vantage Dashboard, you must enable user administration as described in *Enabling and Disabling User Administration* in the *Vantage Domain Management Guide*.

The following topics describe how to connect to the Vantage domain after you enter the URL:

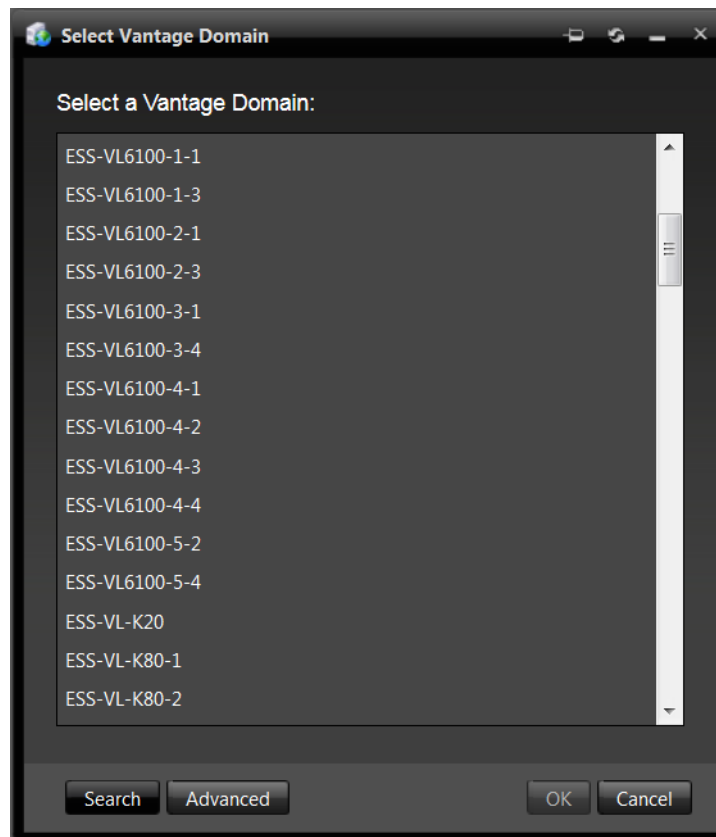
- [Connecting for the First Time](#)
- [Reconnecting to Vantage Dashboard](#)

Connecting for the First Time

The first time you connect to the Vantage Dashboard, you are asked to select a domain to which the Vantage Dashboard should attach (see the figure below).

Click the Search button to search for and list available Vantage domains.

Select a domain and click OK.

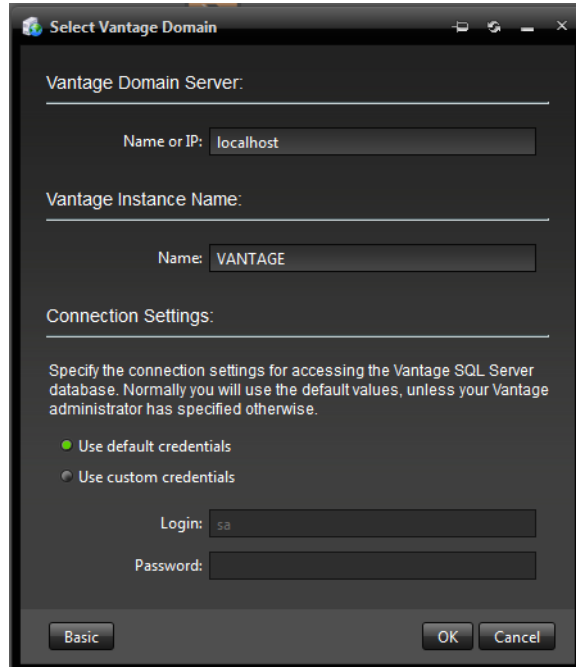


If the Vantage domain database has a custom password, or if the Vantage domain you seek is not listed, click *Advanced*.

In the Advanced window, you can enter a domain *Name or IP* address and connection settings (following figure), including the *Vantage Instance Name*, and database login credentials.

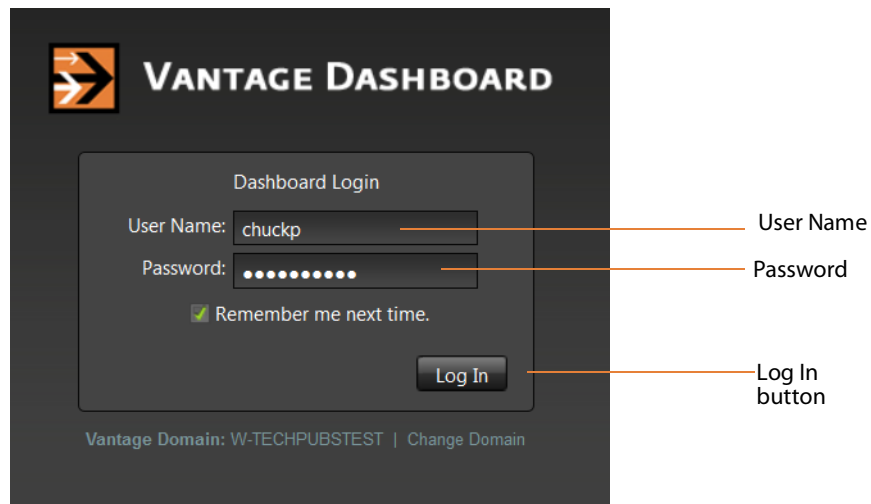
If your Vantage database uses the default Vantage credentials, you can leave *Use default credentials* selected, and just click OK to log in.

If your Vantage database has unique credentials, click *Use custom credentials* and enter a *Login* and *Password* before clicking *OK* (or *Basic* to return to the basic domain selection window or *Cancel* to cancel the domain selection.)



After you click OK, Vantage Dashboard logs into the selected domain, and prompts you for your Vantage user login information.

When the login dialog box displays (see the figure below), enter the User Name and Password assigned by your Vantage Administrator, and then click Log In.



These are the default user name and password, which remain the same until changed:

- User Name: Administrator
- Password: <none> (no characters entered)

Note: User passwords are encrypted in the Vantage domain database. Users have the option of changing their password (see [Changing Your Vantage User Password](#)).

Check *Remember me next time* to store the authentication token in a persistent cookie in the browser. This keeps you authenticated if you close your browser and reopen it.

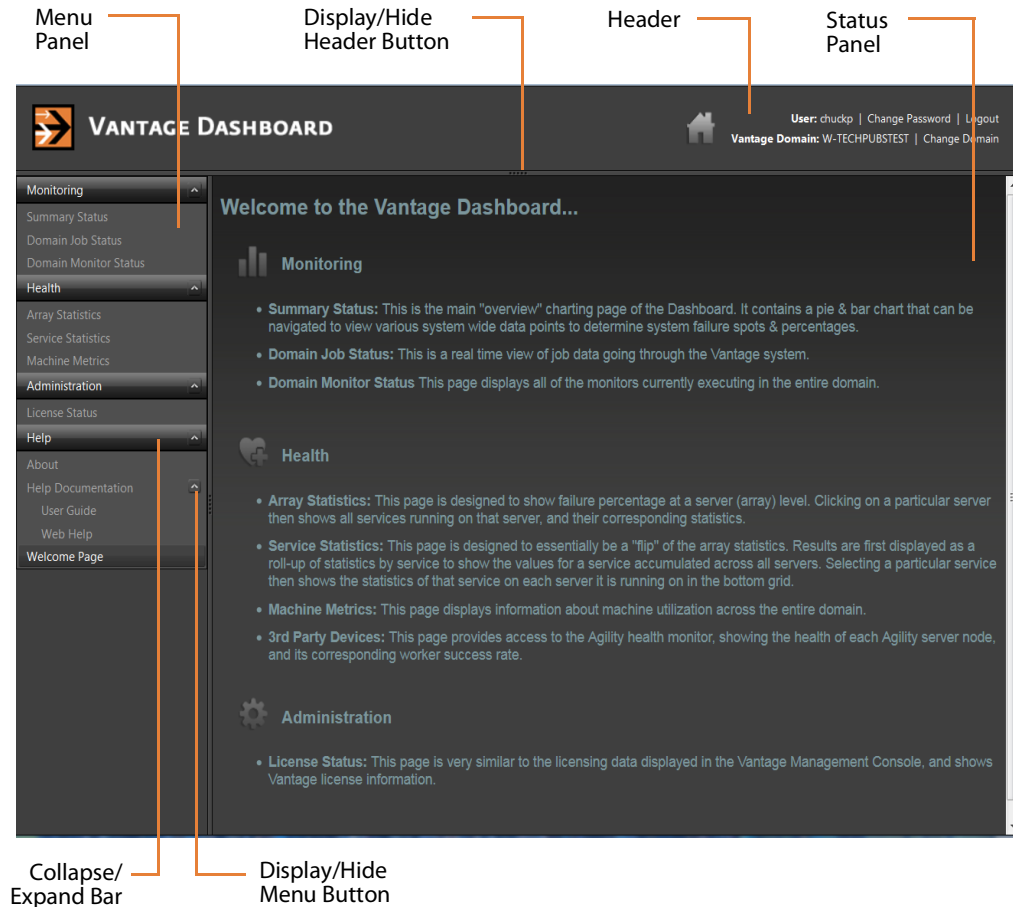
Reconnecting to Vantage Dashboard

After you connect to the Vantage Dashboard for the first time, the Vantage Dashboard remembers the domain to which you connected and displays the Dashboard Login prompt (see the [When the login dialog box displays \(see the figure below\), enter the User Name and Password assigned by your Vantage Administrator, and then click Log In.](#) figure). Enter the User Name and Password assigned by your Vantage Administrator, then click Log In.

Note: Cookies should not be disabled by either browser settings or group policy. If cookies are disabled, the Vantage domain will not be remembered.

Understanding the Vantage Dashboard Display

Upon successful login, Vantage Dashboard displays the welcome screen shown in the figure below.



Vantage Dashboard displays information and controls in three panes: header, menu, and status. The header panel displays controls for session management, and the left menu panel displays menu selections, which are described in the Welcome page in the status panel when Vantage Dashboard starts. The status panel displays information about your domain, based on the selection you make in the menu panel.

Hiding and Displaying the Header Panel

The header panel displays the Vantage user name you are using and the Vantage domain to which you are connected. The header panel also displays controls you can use to change your Vantage user password, change the selected Vantage domain, or log out from the Vantage domain. To hide or display the header panel, click the display/hide button shown in the figure.

Managing the Menu Panel

You can collapse or expand the items in the menu panel, and you can hide or display the menu panel.

You can collapse menus by clicking the up arrow to the right of the menu name (the [Upon successful login, Vantage Dashboard displays the welcome screen shown in the figure below.](#) figure), and you can expand menus by clicking the down arrow, which displays for collapsed menus.

To hide or display the menu panel, click the display/hide button shown in the [Upon successful login, Vantage Dashboard displays the welcome screen shown in the figure below.](#) figure.

Sorting Lists in the Status Panel

Most pages that appear in the status panel contain lists, which can be sorted based on the content of any of the columns. To do this, click on any column heading. The first click sorts the list rows in ascending order of the information in the selected column. The second click sorts them in descending order. A third click removes sorting and displays the default sort order.

Logging Out

When you are logged in to the Vantage Dashboard, anyone with access to your computer has access to the Vantage Dashboard reports and controls. To prevent unauthorized access to Vantage Dashboard when your computer is unattended, log out by clicking Logout in the Vantage Dashboard header.

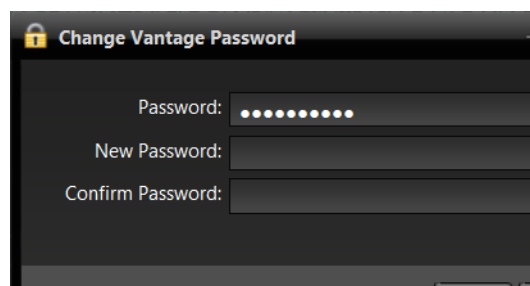
After log out, the log in window displays again.

Changing Your Vantage User Password

To change your Vantage password, do the following:

1. Click Change Password in the Vantage Dashboard header.

Vantage Dashboard displays the dialog to change your password.



2. Enter your current password in the Password field.
3. Enter your new password in the New Password field, and confirm it by re-entering it in the Confirm Password field.
4. Click Save when finished.

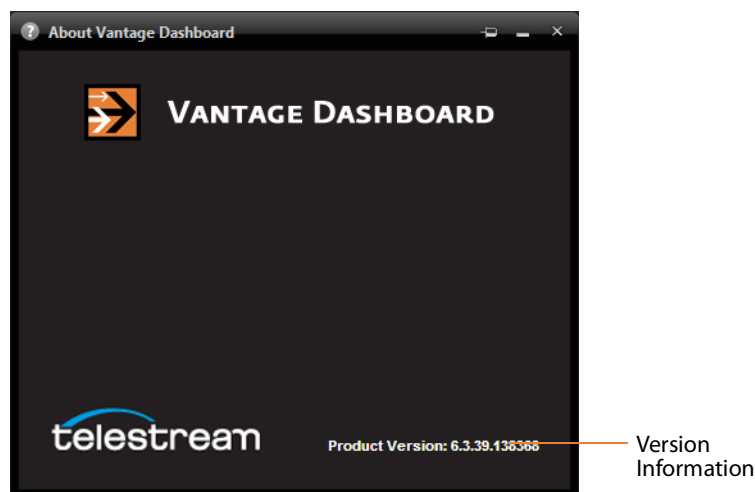
Changing Vantage Domains

Vantage Dashboard can monitor just one domain at a time. To change the domain you are monitoring, do the following:

1. Click Change Domain in the Vantage Dashboard header.
2. If you are logged into Vantage Dashboard, you are prompted to log out. Click OK to log out.
3. Select a domain name in the domain list that displays (see the figure below), and click OK.
4. When the Vantage Login dialog appears, enter a user name and password, and click Log In.

Displaying Product Version Information

To display the Vantage Dashboard version number, click Help > About in the menu panel. Vantage Dashboard displays the version information as shown in this figure:



Displaying Help

Vantage Dashboard provides help (the user's guide you are reading) in two different formats: PDF format and HTML.

To display this user guide in PDF format, click Help > User Guide in the menu panel.

To display context-sensitive help, click the Help button in Vantage Dashboard.

To display this user guide in HTML format, click Help > Web Help in the menu panel.

This HTML online help system consists of two panels:

- The left panel displays the following tabs:
 - Contents tab—This tab displays a hierarchically organized set of chapters and pages. This list provides a wide range of overview and how-to topics that explain how to add, configure, and manage Vantage components.
 - Index tab—This tab provides a list of keywords you can click to display its associated page.
 - Search tab—Looks for specific words or phrases, resulting in a display of topics that match your search criteria.
 - Favorites tab—lists favorite topic that have been saved by adding them to the list. Topics are added by clicking the Add button.
- The right panel displays the page you have selected from one of the tabs on the left.

Returning to the Welcome Page

Click Help > Welcome Page in the menu panel to display the welcome page that is presented when the Vantage Dashboard is first started up. This page displays descriptions of all the menu items for the Vantage Dashboard.

Troubleshooting Tip

In some situations, if a Vantage administrator modifies (adds or removes) a virtual directory on the IIS server, the Web Dashboard session will close. This does not change the Web Dashboard configuration or operation. To continue using Web Dashboard, start the program as described in [Starting the Vantage Dashboard](#).

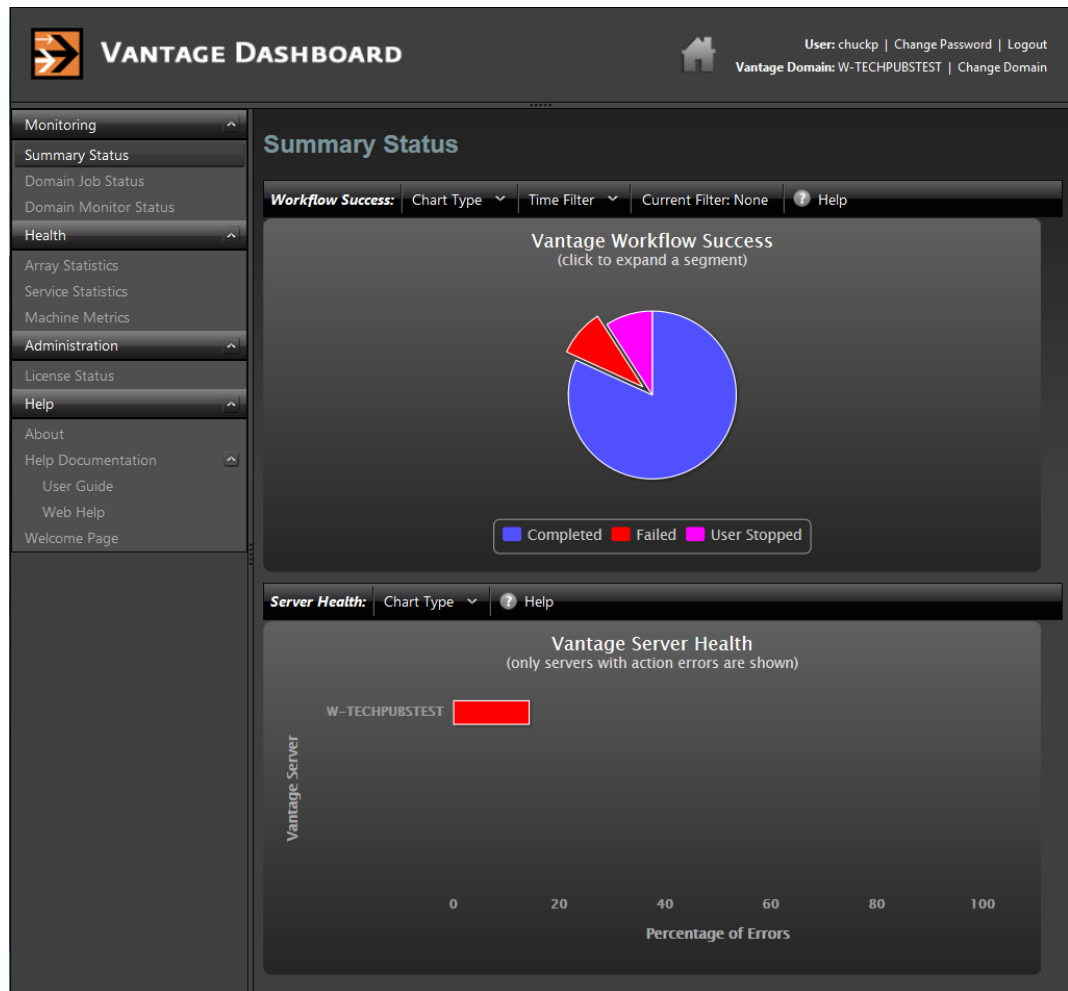
Monitoring a Domain

The following topics provide information on monitoring a domain:

- [Displaying Domain Summary Status](#)
- [Managing Domain Job Status](#)
- [Viewing Domain Monitor Status](#)

Displaying Domain Summary Status

The Summary Status page shown in the figure below provides a high-level status of the Vantage domain to which you have connected. To display the Summary Status page, select Monitoring > Summary Status in the menu panel.



Note: The Chart Type menu displays pie charts for action allocation and services.

The pie chart displays the status of workflow operation in the domain. You can hover the cursor over the pie chart segments to display exact percentages for completed, failed, and stopped workflows. This chart automatically updates over time.

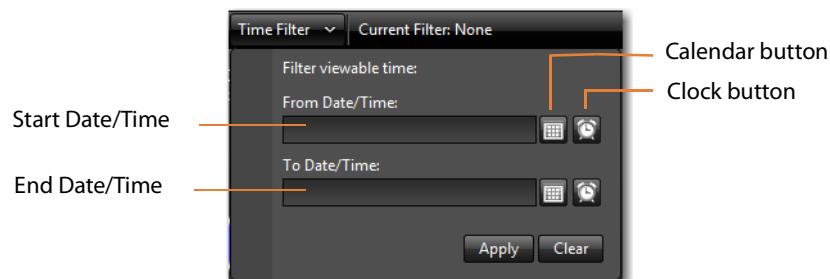
If the pie chart shows that all jobs are completing, you might want to use other Vantage Dashboard pages to determine the domain performance level. If the pie chart indicates that there are failed jobs, you might want to use a *time filter* to define the period for which you want summary status. For example, if you recently fixed a problem in the domain, you might want to use a time filter to limit the display to workflow operation since the fix was applied.

Note: The upper and lower panels in the Summary Status panel are separate reports for different views of the Vantage domain. In preceding Domain Summary Status figure, the pie chart displays statistics from Job Status, and the bar graph displays statistics based on service metrics. Be aware that certain events can change the reports to appear inconsistent. For example, once all failed jobs have expired or been deleted, the pie chart might show 100% success, while the bar graph still reports errors. Likewise, if a service is brought in and out of maintenance mode, which resets service statistics, the pie chart can show a larger percentage of errors than indicated by the bar graph.

To specify a time filter, do the following:

1. Click the Time Filter button above the pie chart.

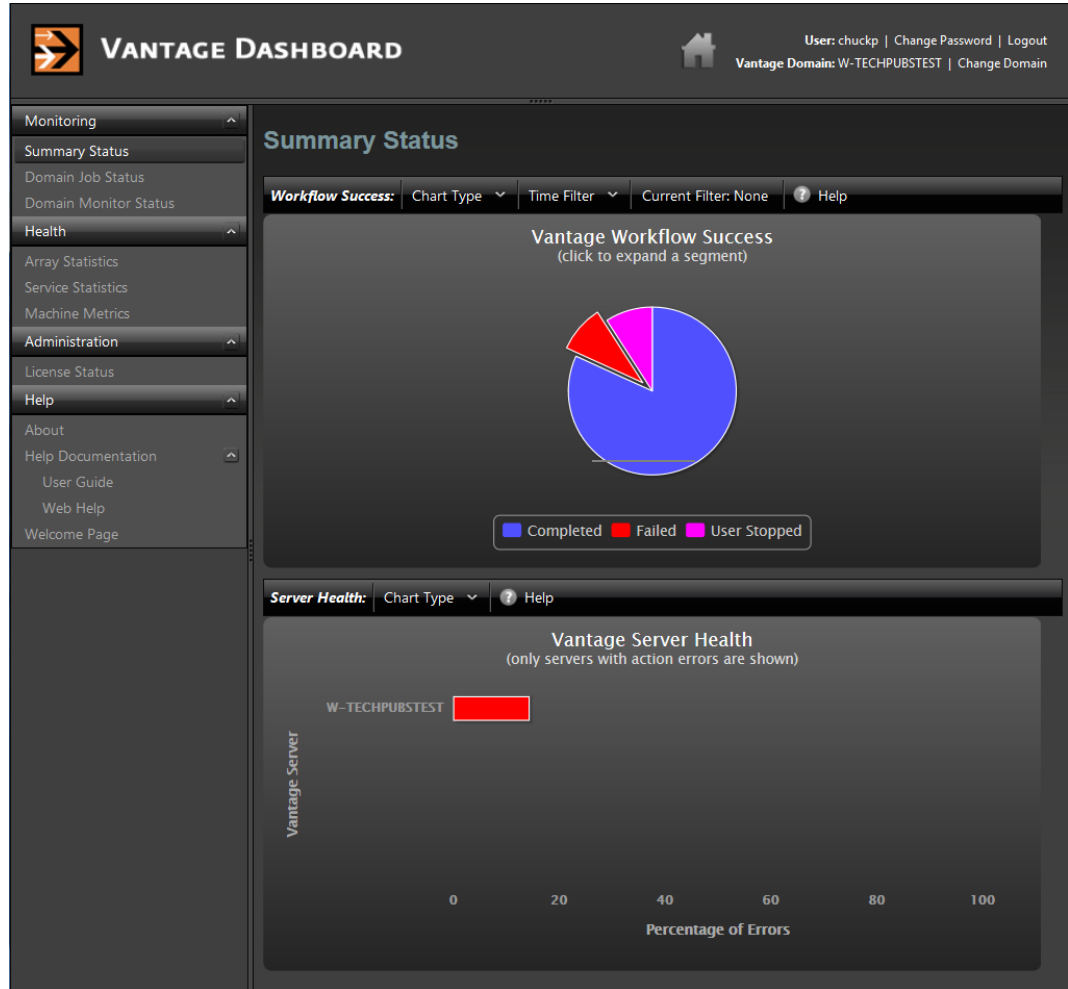
Vantage Dashboard displays the dialog shown in this figure:



2. Type a date and time in each text box, or use the calendar and clock tools in the window to select the date and time.
3. Click Apply to close the filter dialog and display the pie chart for the filter period.

Vantage Server Health

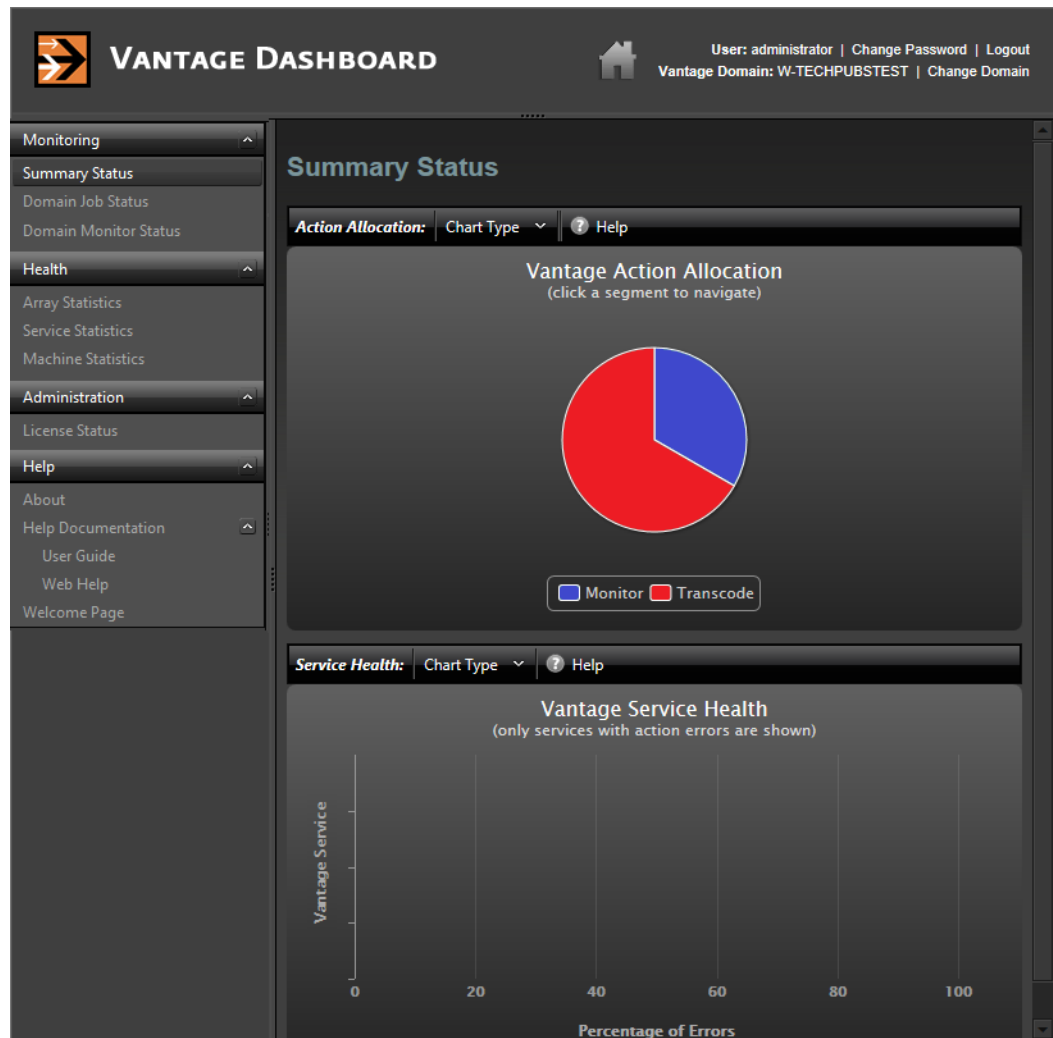
The Vantage Server Health panel (see below) on the Summary Status page displays the percentage of errors for each Vantage server in your domain. To display this panel, select Monitoring > Summary Status.



The bar chart displays the error rate for all servers in the domain. You can hover over a bar in the bar chart to display an exact percentage, and you can use the Chart Type dropdown list to display the services that experienced the errors.

Vantage Service Health

When an appropriate chart type is selected in the Summary Status panel, the upper panel displays a pie chart that shows the relationship between queued and running actions for one or all services. When an appropriate chart type is selected in the lower panel, this panel displays a bar chart showing the error rate for services with errors.



Displaying Action Allocation Across Services

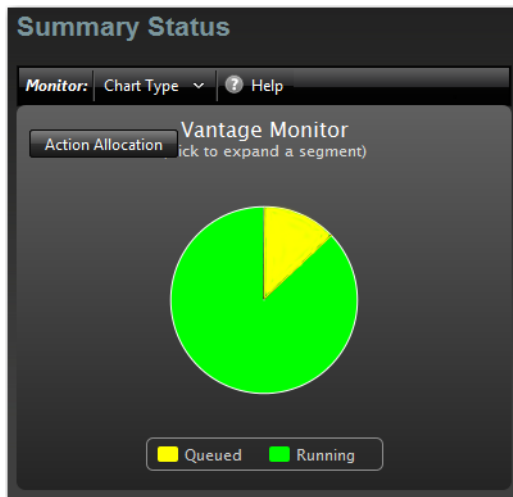
When the Action Allocation chart type is selected, the Summary Status page shows a pie chart that shows the relative use of all active services (see below). You can hover the cursor over any chart segment to see the numerical value for that segment.

To display the Action Allocation chart, do the following:

1. Select Monitoring > Summary Status.
Vantage Dashboard displays the default Summary Statistics page shown below.
2. Click Chart Type in the upper panel and select Action Allocation.

Displaying the Queue and Run Status for a Service

The upper panel of the Summary Status page supports pie chart views for Vantage services. When you select a chart type for a specific service, the Summary Status page displays a pie chart that shows the percentage of running and queued actions for a service (see the figure). You can hover the cursor over any chart segment to see the numerical value for that segment. If no chart appears, there are no active or queued actions for that service.

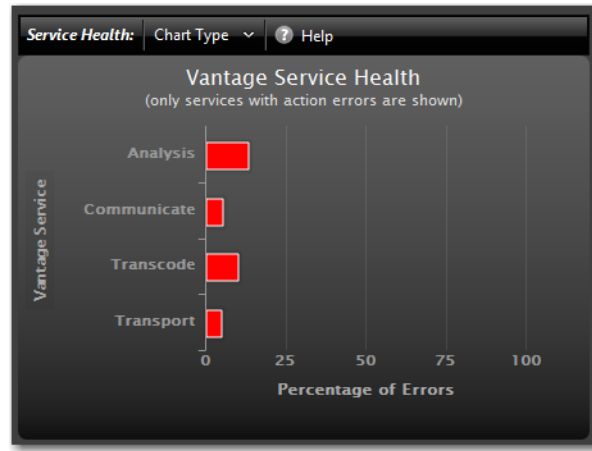


To display a chart for any service, do the following:

1. Select Monitoring > Summary Status.
Vantage Dashboard displays the default Summary Statistics page shown above.
2. Click Chart Type in the upper panel and select a service from the list.

Displaying the Error Rate for all Services

The Vantage Service Health chart (see below) displays the percentage of errors for any domain services that have errors. This display is refreshed when services are restarted.



To display the Services Health chart, do the following:

1. Select Monitoring > Summary Status.
Vantage Dashboard displays the default Summary Statistics page shown above.
2. Click Chart Type in the lower panel and select Service Health.

Managing Domain Job Status

The Domain Job Status page (see below) in Vantage Dashboard allows you to manage jobs throughout the domain.

VANTAGE DASHBOARD User: administrator | Change Password | Logout
Vantage Domain: WIN-U2T33OC1758 | Change Domain

Domain Job Status

Job Status: Options Highlight State Rows Show Error Details Show Filters Help

Job	Workflow	Category	State	Progress	Started	Updated	Run Time	Expires
Manu...	Ingest...	Test C...	Complete	100%	8/24/2017 4:39:34 PM	8/24/2017 4:40:19 PM	1 min. 2 sec.	1/20/2029 7:40:19 AM

Page size: 100 1 items in 1 pages

Actions: Options Highlight State Rows Show Error Details Show Filters Help

Action	Description	State	Progress	Machine	Created	Updated
Flip	Performs a single file tran...	Complete	100%	WIN-U2T33O...	8/24/2017 4:39:34 PM	8/24/2017 4:40:18 PM
Flip	Performs a single file tran...	Complete	100%	WIN-U2T33O...	8/24/2017 4:39:34 PM	8/24/2017 4:40:17 PM
Receive	Receive job	Complete	100%	(NA)	8/24/2017 4:39:34 PM	8/24/2017 4:39:34 PM
Register	Add binder to catalog	Complete	100%	WIN-U2T33O...	8/24/2017 4:39:34 PM	8/24/2017 4:40:19 PM

Actions list Job Status list

The Domain Job Status page provides a real time view of Vantage workflow jobs, and it provides controls that you can use to manage job processing. The Domain Job Status page displays two lists: the Job Status list and the Actions list.

The Job Status list presents workflow jobs, the state of each job (such as Complete, Failed, Stopped, In Process, Waiting), and timestamps for job events. Whenever a job is selected, the actions associated with that job are listed in the Actions list at the bottom of the window. The Actions list presents status information for each action and controls for managing the actions.

The following topics describe how to manage the jobs and actions listed on the Domain Job Status page:

- [Paging Through the Job List](#)
- [Filtering Jobs or Actions](#)
- [Highlighting Job or Action Status Rows](#)
- [Displaying Job Error Details](#)
- [Stopping Jobs](#)
- [Restarting Jobs](#)
- [Deleting Jobs](#)

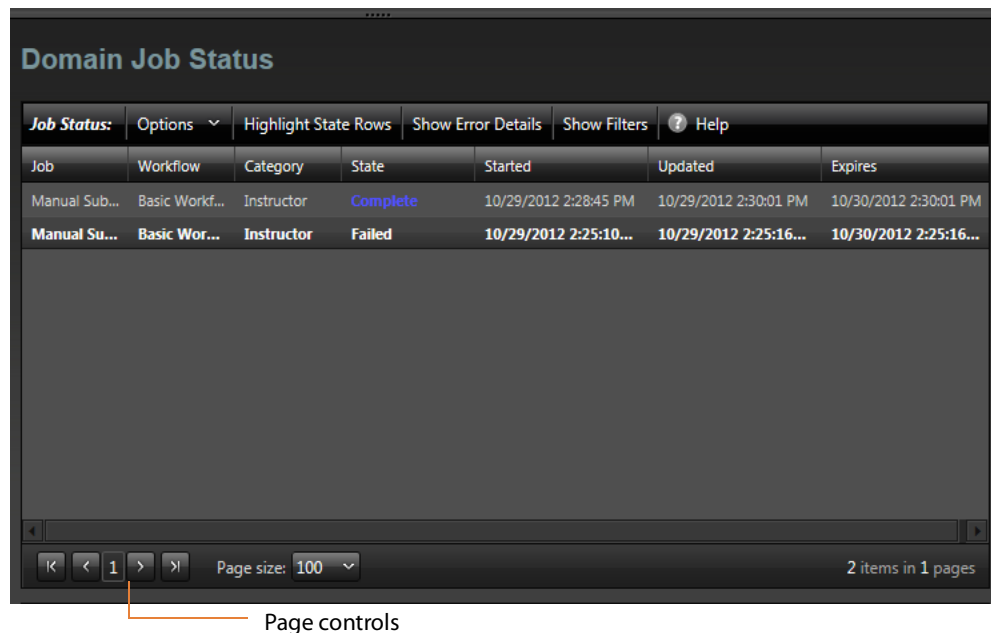
- [Displaying Action Error Details](#)
- [Changing Action Priority](#)
- [Restarting Actions](#)

Paging Through the Job List

You can navigate to any page by clicking the page number or by clicking the forward (right arrow) and previous (left arrow) buttons (see the figure below). The arrow buttons with the vertical bars navigate to the first and last pages.

You can also enter the number of jobs to be listed on each page using the page size control shown in the following figure.

Page adjustments are useful when adjusting performance with large amounts of data. A smaller page size results in less data sent to the browser, but also displays a smaller amount of all the available data.



The screenshot shows the 'Domain Job Status' interface. At the top, there are several tabs: 'Job Status', 'Options', 'Highlight State Rows', 'Show Error Details', 'Show Filters', and 'Help'. Below the tabs is a table with the following columns: Job, Workflow, Category, State, Started, Updated, and Expires. The table contains two rows of data. The first row shows a 'Manual Sub...' job in a 'Complete' state. The second row shows a 'Manual Su...' job in a 'Failed' state. Below the table, there are pagination controls including arrows for navigation, a page number '1', a 'Page size: 100' dropdown menu, and a status indicator '2 items in 1 pages'. An orange line points from the text 'Page controls' to the pagination area.

Job	Workflow	Category	State	Started	Updated	Expires
Manual Sub...	Basic Workf...	Instructor	Complete	10/29/2012 2:28:45 PM	10/29/2012 2:30:01 PM	10/30/2012 2:30:01 PM
Manual Su...	Basic Wor...	Instructor	Failed	10/29/2012 2:25:10...	10/29/2012 2:25:16...	10/30/2012 2:25:16...

Filtering Jobs or Actions

The filter feature allows you to selectively limit the row entries in the Job Status list or the Actions list based on the contents displayed in one or more columns. After you apply each filter, the list displays only those rows in which the column entries conform to the filter settings. To remove filters and display more entries, you must change the filter settings to display all items.

To display the filters for the Job Status list or the Actions list, click Show Filters (see the preceding and following figures). Click Show Filters again to hide the filters.

Action	Description	State	Progress	Machine	Created	Updated
Flip	Performs a single file tran...	Complete	100%	WIN-U2T33O...	8/24/2017 4:39:34 PM	8/24/2017 4:40:18 PM
Flip	Performs a single file tran...	Complete	100%	WIN-U2T33O...	8/24/2017 4:39:34 PM	8/24/2017 4:40:17 PM
Receive	Receive job	Complete	100%	(NA)	8/24/2017 4:39:34 PM	8/24/2017 4:39:34 PM
Register	Add binder to catalog	Complete	100%	WIN-U2T33O...	8/24/2017 4:39:34 PM	8/24/2017 4:40:19 PM

The filter settings fall into three groups, which are listed in the following table and described in the following topics:

- [Setting Text Filters](#)
- [Setting State Filters](#)
- [Setting Period Filters](#)

Table 1. Filter Types and Descriptions

Filter	Type	Description
Action	Text	The name of a workflow action.
Category	Text	The category to which the workflow is assigned.
Created	Period	The date and time that an action was created for job processing.
Description	Text	The description entered for the workflow in the Designer.
Expires	Period	The date and time that a job expires.
Job	Text	The name of a job, which is usually the ingress filename.
Machine	Text	The name of the domain server that is processing the action.
Progress	Text	The completion percentage for the action.
Run Time	Text	The amount of time the workflow took to execute.
Started	Period	The date and time that a job is started.
State	State	The current state of the job or action.
Updated	Period	The date and time of the last status update for the job or action.
Workflow	Text	The workflow that is processing a job.

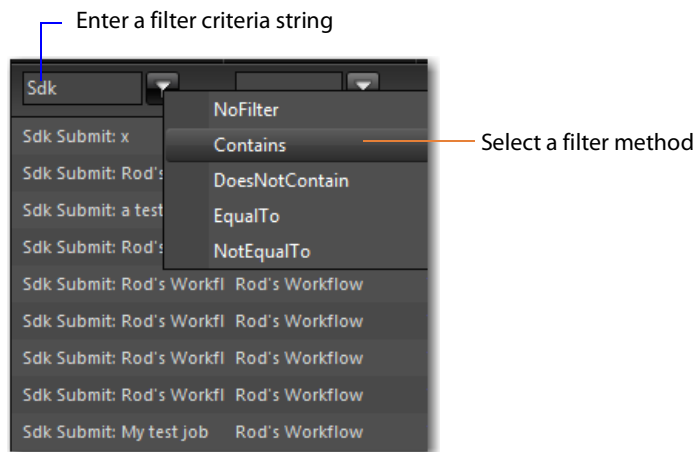
Setting Text Filters

Text filters allow you to enter text and define a method that defines how the text is applied. For example, you can specify “.wmv” in a Job filter and then select a method to display only rows with that extension or to exclude all jobs with that extension. The following table lists the methods you can use to control text filters.

Method	Description
Contains	Displays only rows in which the column entry contains the specified text.
DoesNotContain	Displays only rows in which the column entry does not contain the specified text.
EqualTo	Displays only rows in which the column entry exactly matches the specified text.
NoFilter	Removes any existing filter entry for this column.
NotEqualTo	Displays only rows in which the column entry does not match the specified text.

To set a text filter, display the filters, type text in the text box above the column you want, click the funnel button to the right of the text box, and select the method for the text filter (see the following figure).

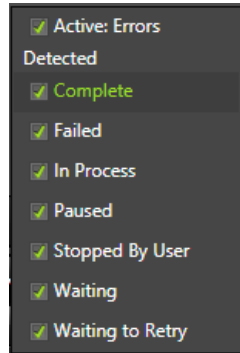
Note: When you apply a text filter, be sure to enter a value that actually appears in that column. If the filter text does not match any values in the column, the filter might not exclude any rows, or it might exclude all rows, depending on the method selected.



Setting State Filters

State filters limit the list items to those rows that display a state that is selected in the state list. The default filter selects rows in all states, and displays as *All States*. If you set the filter to display a subset of all states, the filter displays *Custom*.

To set a state filter, display the filters, click the down arrow in the State filter column for the appropriate list, and check or clear the checkboxes for each state, as depicted in this figure:



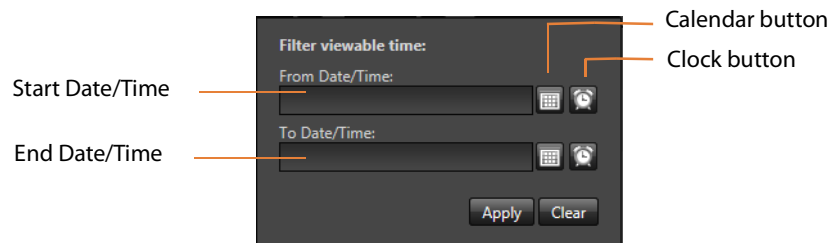
Setting Period Filters

Period filters define start and end times for a period of time for which you want to display rows. When a period filter is applied to a column, Vantage Dashboard only displays rows for which the selected column value falls within the defined period.

To specify a period filter, do the following:

1. Display the filters for a time-oriented column, such as the Updated column.
2. Select the period filter you want to set.

Vantage Dashboard displays the dialog shown in the following figure.



3. Type a date and time in each text box, or use the calendar and clock tools in the window to select the date and time.
4. Click Apply to set the filter, or click Clear to remove the filter.

Highlighting Job or Action Status Rows

Vantage Dashboard provides an option to highlight job or action status rows using the color representing the row's state (such as green=In Process, red=Failed, magenta=Stopped, yellow=Waiting). Highlighting can make particular job states more visible in a long list of jobs.

To change the highlighting for the Job Status list or the Actions list, click Highlight State Rows above the appropriate list. Each time you click this control, the highlighting toggles on or off, to the opposite of the previous state.

Displaying Job Error Details

To display error details for a job listed in the Job Status list, select a failed job and click Show Error Details.

Stopping Jobs

To stop a job, do the following:

1. Select Monitoring > Domain Job Status.
2. In the Job Status list, select a job.
3. Click Options and select Stop (or right-click on the job and select Stop).

Restarting Jobs

To restart a job, do the following:

1. Select Monitoring > Domain Job Status.
2. In the Job Status list, select a job.
3. Click Options and select Restart (or right-click and select Restart).

Deleting Jobs

To delete a job, do the following:

1. Select Monitoring > Domain Job Status.
2. In the Job Status list, select a job.
3. Click Options and select Delete, or right-click on the job and select Delete.

Displaying Action Error Details

To display error details for an action listed in the Actions list, select a failed action and click Show Error Details.

Changing Action Priority

Vantage evaluates action priority when multiple actions of the same type are ready for processing. Vantage processes actions with the highest numerical priority value first, and in some cases, Vantage pauses lower priority jobs, processes higher priority jobs, and then finishes processing of the lower priority jobs.

You can change action priority to change the processing order of queued actions. To change the priority of an action, do the following:

1. Select Monitoring > Domain Job Status.
2. In the Job Status list, select a job.
3. In the Actions list, select an action.
4. Select Options > Change Priority, or right-click the action and select Change Priority.
5. Specify a new priority value and click OK.

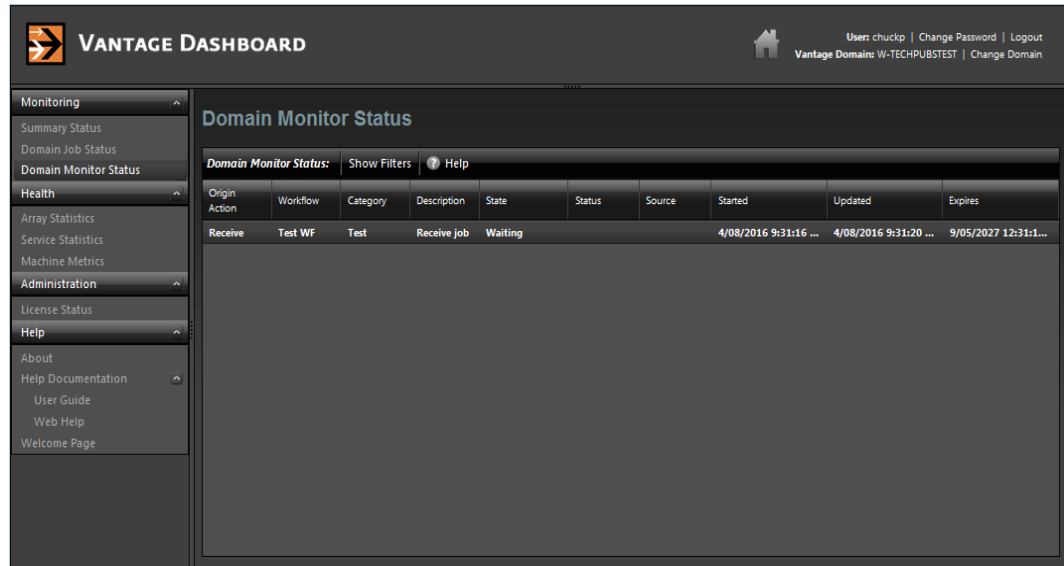
Restarting Actions

To restart an action, do the following:

1. Select Monitoring > Domain Job Status.
2. In the Job Status list, select a job.
3. In the Actions list, select an action.
4. Click Options and select Restart, or right-click on the action and select Restart.

Viewing Domain Monitor Status

When you activate a workflow, the Dashboard automatically displays the Domain Monitor Status panel to show you the status of all origin actions in the Domain. (You can always select any workflow and view its monitor (or job) status, including a record of past jobs.)



Notice that the Watch’s action state is listed as *In Process*, which indicates it has started executing, and it is polling for new files. When a new file is discovered, a job is created that executes the workflow. Actions may also be *Waiting*—the state that the transaction enters while Vantage is determining which service should process it. A transaction remains in *Waiting* state until it is accepted by a service for processing.

If you deactivate the workflow, the Watch service stops monitoring the hot folder, and the record is saved in the database for history. When you re-activate the workflow, a new record is added to the list.

You can right-click a row in the table (or select the Options drop-down menu) and select *View Status* to display more detailed information. Using the same drop-down or right-click menu, you can also *Enable* or *Disable* the workflow.

As with other Dashboard panels, you can click on column headings to sort the display, or click on *Show Filters* and enter column filter text to filter the display. For example, you can enter a date and time in the *Started* column to view only those actions that were started after a certain date or time.

Managing Health of a Domain

The following topics describe how you can use Vantage Dashboard to monitor servers in your domain:

- [Viewing Array Statistics](#)
- [Viewing Service Statistics](#)
- [Viewing Machine Metrics](#)

Viewing Array Statistics

The Array Statistics page (see the figure below) displays two panels. The upper panel displays statistics for all servers in the domain, and after you select a server in the upper panel, the lower panel displays statistics for all the services on the selected server.

To display the Array Statistics page, select Health > Array Statistics.

VANTAGE DASHBOARD | User: administrator | Change Password | Logout
 Vantage Domain: W-TEHPUBSTEST | Change Domain

Monitoring

- Summary Status
- Domain Job Status
- Health**
 - Array Statistics**
 - Service Statistics
 - Machine Metrics
 - Domain Monitor Status
 - 3rd Party Devices
- Administration
 - License Status
- Help
 - About
 - Help Documentation
 - User Guide
 - Web Help
 - Welcome Page

Array Statistics | Options | Help

Server	% of Failures	Input Queue Length	CPU Utilization
W-CHUCKP	0 %	0	0 %
W-TEHPUBSTEST	127 %	0	3 %

Service Statistics | Options | Help

Service	Sessions	State	Passed/Failed	Load/Target Load	Cur. Queue	Avg. Queue	Avg. Wait Time
Analysis	0	Online	1 / 12	0 / 4	0	0	00:00:00
Aspera	0	Online	0 / 0	0 / 4	0	0	00:00:00

This table describes the columns in Array Statistics and Service Statistics lists.

Column	Description
% of Failures	Displays the error rate for each server in the domain.
Avg. Queue	Displays the average number of actions in the service action queue.
Average Wait Time	Displays the average time that all jobs spend waiting in the queue while the service is saturated and unable to take on new jobs. For example, if the service has processed 10 jobs and the waiting times were 0,0,0,0,0,0,0,0,0,10 (the last job waited 10 seconds), an average wait time of 1 second would be reported. This indicator helps to highlight ongoing load imbalances or the need for additional computing power to handle overloads.
CPU Utilization	Displays the percentage of CPU resources that are currently being used by Vantage services on a server.
Cur. Queue	Displays the current number of actions in the service action queue.
Input Queue Length	Displays the number of queued actions for all services on a Vantage server.
Load/Target Load	<p>Displays load balancing status.</p> <p>For session-based load balancing, this displays the current number of sessions for this service (Load) and the configured session limit for this service.</p> <p>For cost based load balancing, this displays the current cost of all active sessions for this service (Load) and the target cost (Target Load) configured for this service.</p> <p>For more information on load balancing, see <i>Managing Load Balancing/Task Scheduling</i> in the <i>Vantage Domain Management Guide</i>.</p>
Server	Lists the servers in the domain that support the selected service.
Passed/Failed	Displays the number of actions that have successfully completed (passed) and failed.
Service	Displays the name of a service that is supported in the domain.
Sessions	Displays the current number of active sessions.
State	Displays the current state of each service, either <i>Online</i> or <i>Maintenance</i> .

Entering and Exiting Server Maintenance Mode

The Array Statistics page allows you to put the entire server with all Vantage services on the selected server in maintenance mode, or it allows you to put individual services into maintenance mode. You place a server or service into maintenance mode when you want to reconfigure services, delete a license, or make other changes that require a Vantage service or all services to be offline.

Note: Placing any or all services in maintenance mode erases the metrics for those services, which affects the services bar graphs.

Server Maintenance Mode

To enter or exit server maintenance mode, do the following:

1. Select Health > Array Statistics.
2. Select a server in the upper panel.
3. Click Options and select either Enter Maintenance Mode or Exit Maintenance Mode.

Note: Server maintenance puts *all* services into maintenance mode. If you want to shut down individual services, see the following procedure.

Individual Service Maintenance Mode

To enter or exit service maintenance mode (for a single service), do the following:

1. Select Health > Array Statistics.
2. Select a server to manage in the upper panel.
3. Select a service to manage in the lower panel.
4. Click Options and select either Enter Maintenance Mode or Exit Maintenance Mode.

Resetting Service Statistics on the Array Statistics Page

You might want to reset service statistics after making a configuration change to your Vantage Domain. When you reset statistics, all cumulative values are reset to zero, which allows you to establish a new baseline for the domain.

You can reset statistics on the Array Statistics and Service Statistics pages.

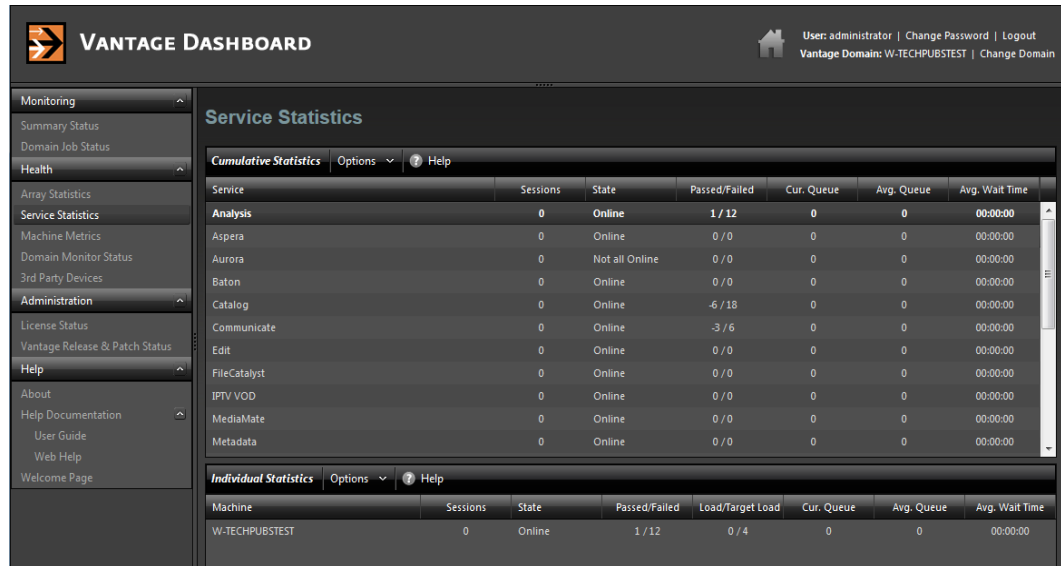
To reset statistics for one or all services using the Array Statistics page, do the following:

1. Select Health > Array Statistics.
2. Select a server to manage in the upper panel.
3. If you want to reset statistics for a service, select the service in the lower panel.
4. Click Options in the lower panel and select either of the following:
 - *Clear (Reset) Selected Service Metrics History*—Clears only the metrics history of the service selected.
 - *Clear (Reset) All Service Metrics History*—Clears the metrics history of all the services.

Viewing Service Statistics

The Service Statistics page (the following figure) displays two panels. The upper panel displays cumulative statistics for all services in the domain, and after you select a service in the upper panel, the lower panel displays statistics for that service for all servers in the domain.

To display the Service Statistics page, select Health > Service Statistics.



The following table describes the columns in Cumulative Statistics and Individual Statistics lists.

Column	Description
Avg. Queue	Displays the average number of actions in the service action queue. Queued actions are actions that are waiting to be processed.
Average Wait Time	Displays the average time that all jobs spend waiting in the queue while the service is saturated and unable to take on new jobs. For example, if the service has processed 10 jobs and the waiting times were 0,0,0,0,0,0,0,0,0,10 (the last job waited 10 seconds), an average wait time of 1 second would be reported. This indicator helps to highlight ongoing load imbalances or the need for additional computing power to handle overloads.
Cur. Queue	Displays the current number of actions in the service action queue.

Column	Description
Load/Target Load	<p>Displays load balancing status.</p> <p>For session-based load balancing, this displays the current number of sessions for this service (Load) and the configured session limit for this service.</p> <p>For cost based load balancing, this displays the current cost of all active sessions for this service (Load) and the target cost (Target Load) configured for this service.</p> <p>For more information on load balancing, see <i>Managing Load Balancing/Task Scheduling</i> in the <i>Vantage Domain Management Guide</i>.</p>
Machine	Lists the servers in the domain that support the selected service.
Passed/Failed	Displays the number of actions that have successfully completed (passed) and failed.
Service	Displays the name of a service that is supported in the domain.
Sessions	Displays the current number of active sessions.
State	Displays the current state of each service, which is either <i>Online</i> or <i>Not all Online</i> . When a service is in maintenance mode, this column displays <i>Not all Online</i> for that service. Note that a service can be in maintenance mode on one server and online on other servers.

Entering and Exiting Service Maintenance Mode

To enter or exit a service using the Service Statistics page, do the following:

1. Select Health > Service Statistics.
2. Select the service to manage in the upper panel.
3. Click Options and select either Enter Maintenance Mode or Exit Maintenance Mode.

Note: Placing a service in maintenance mode erases the metrics for that service, and this affects the bar graphs for that service.

Resetting Service Statistics on the Service Statistics Page

You might want to reset service statistics after making a configuration change to your Vantage Domain. When you reset statistics, all cumulative values are reset to zero, which allows you to establish a new baseline for the domain.

You can reset statistics on the Array Statistics and Service Statistics pages.

To reset statistics for one or all services using the Service Statistics page, do the following:

1. Select Health > Service Statistics.
2. Select a service to manage in the upper panel.
3. Select a server to manage in the lower panel.
4. If you want to reset statistics for a single service, select the service to manage in the lower panel.
5. Click Options in the lower panel and select either of the following:
 - *Clear (Reset) Selected Service Metrics History*—Clears only the metrics history of the service selected.
 - *Clear (Reset) All Service Metrics History*—Clears the metrics history of all the services.

Viewing Machine Metrics

Selecting Health >Machine Metrics displays key performance information for each Vantage server in the Vantage domain (figure below). This can clarify workloads and bottlenecks at a glance. These are the measurements displayed in each column:

- *Machine*—Lists the name of the machine described by that display row
- *CPU Utilization*—Shows the percentage of CPU capacity in use
- *Network Utilization*—Shows the percentage of network throughput being used
- *RAM Utilization*—Shows the percentage of available memory being used
- *Total RAM*—Shows the total available memory
- *Lightspeed*—Identifies whether this is a Lightspeed server (Yes/No)
- *Database Size*—Lists the size of the domain database

You can sort the list order according to any measure by clicking the column title.

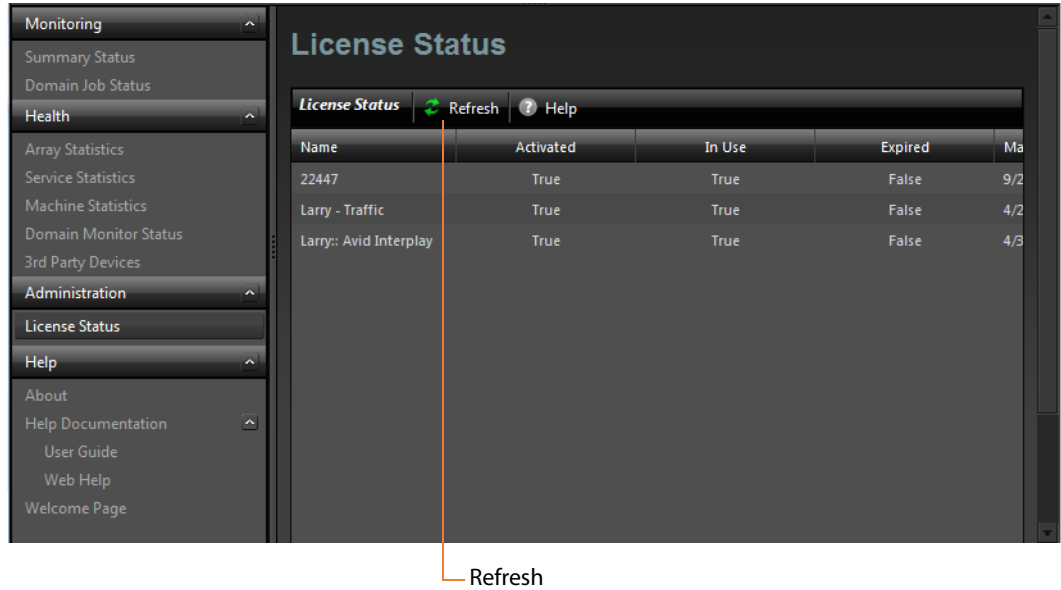
Machine	CPU Utilization	Network Utilization	RAM Utilization	Total RAM (MB)	Model	GPU Utilization	GPU Memory Utilization	Total GPU Memory Per Card (MB)	Current Gpu Memory Per Card (MB)	GPU Utilization Per Card	GPU Memory Utilization Per Card	Database Size
W-TECHPU...	2 %	0 %	53 %	6141	Vantage Server	0 %	0 %	0	0	0	0	334 MB

Administering the Domain

The following topic explains how to use the Dashboard to check domain license status:

Displaying Domain License Status

To display the domain license status, select Administration > License Status in the menu panel. Vantage displays the status as shown here:



To update the License Status page, click Refresh. This table describes the columns.

Column	Description
Name	The name of the license.
Activated	The state of license activation (true or false).
In Use	The state of license utilization (true or false).
Expired	The state of license expiration (true or false).
Maintenance Expires	Date and time that the maintenance expires.

Note: To view the features supported by a license, use the Vantage Management Console (see *Viewing Vantage Licenses* in the *Vantage Domain Management Guide*).